

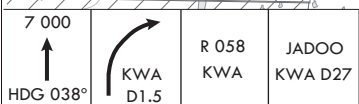
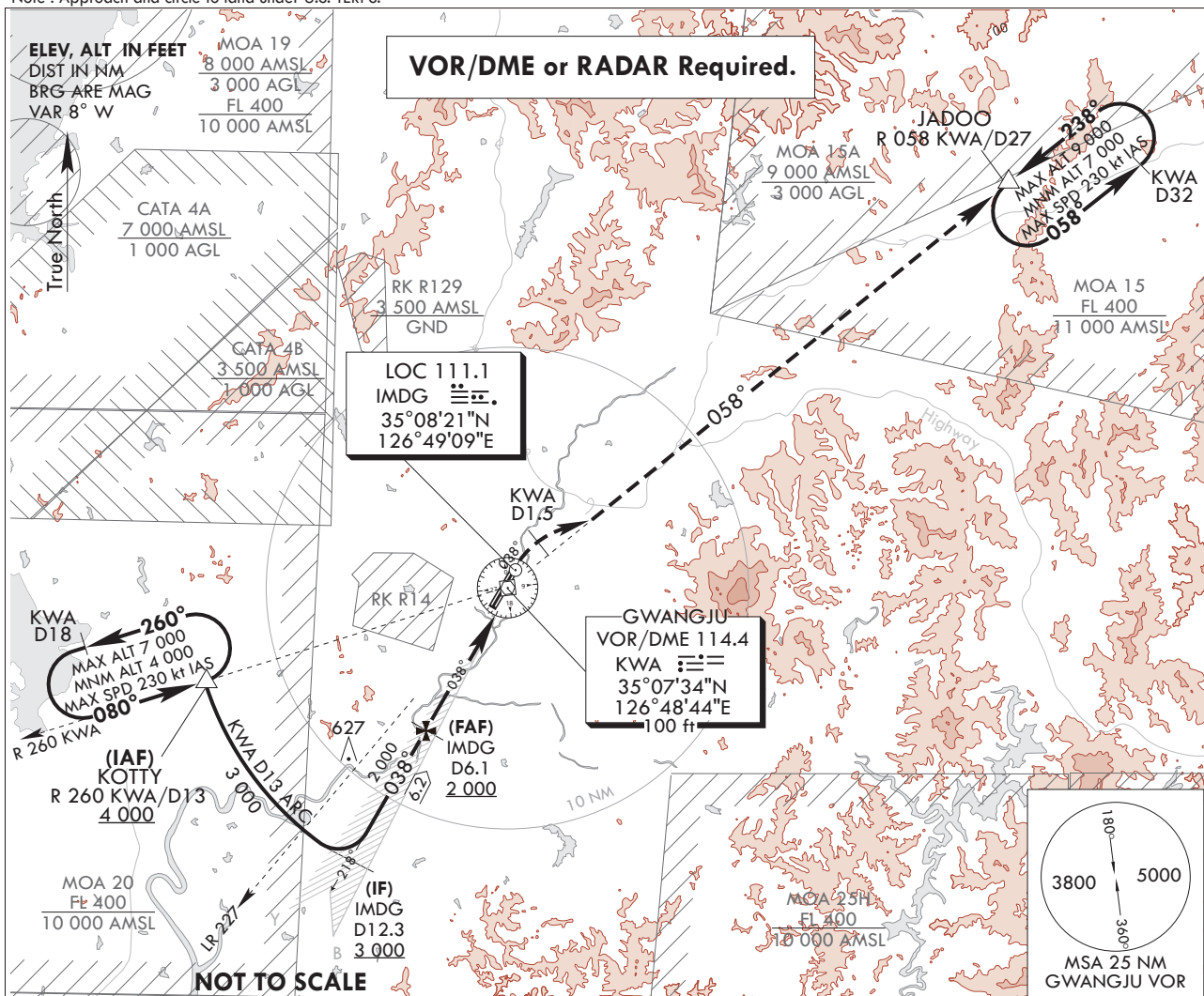
**INSTRUMENT  
APPROACH  
CHART**

**AERODROME ELEV 48 ft**  
HEIGHTS RELATE TO  
THR RWY 04R - ELEV 43 ft  
HIGHEST ELEV TDZ 46 ft

GWANGJU APP 130.0  
228.9  
GWANGJU TWR 118.05  
254.6

**GWANGJU/Gwangju(RKJJ)**  
ILS/DME RWY 04R

Note : Approach and circle to land under U.S. TERPS.

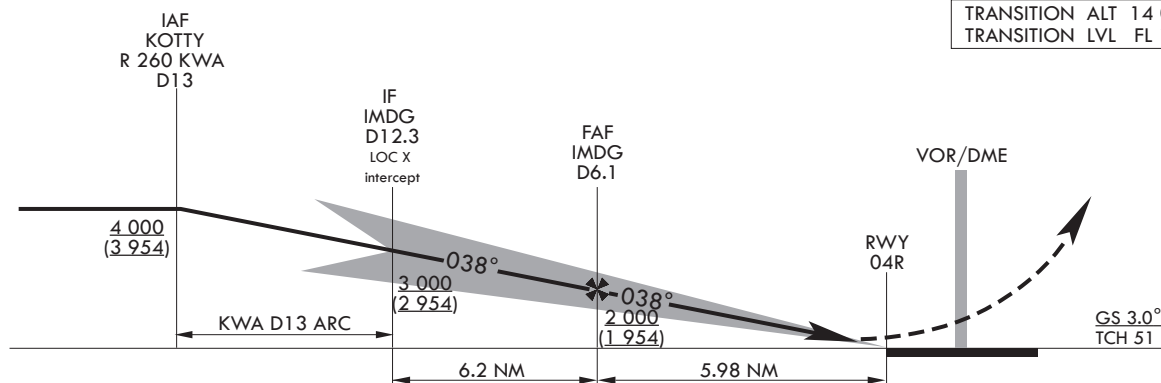


Use IMDG DME when on the LOC course.

**MISSED APPROACH**

Climb to 7 000 ft on HDG 038° to KWA D1.5, and climbing right turn to intercept R 058 KWA and track on R 058 KWA to JADOO and hold, continue climb-in-hold to 7 000 ft.

TRANSITION ALT 14 000  
TRANSITION LVL FL 140



CATEGORY	A	B	C	D
S-ILS 04R		246/24	200(200-1/2)	
S-ILS 04R (ALS INOP)		246/40	200(200-3/4)	

\* Circling not authorized.

Change : Page control.

**INTENTIONALLY**

**LEFT**

**BLANK**

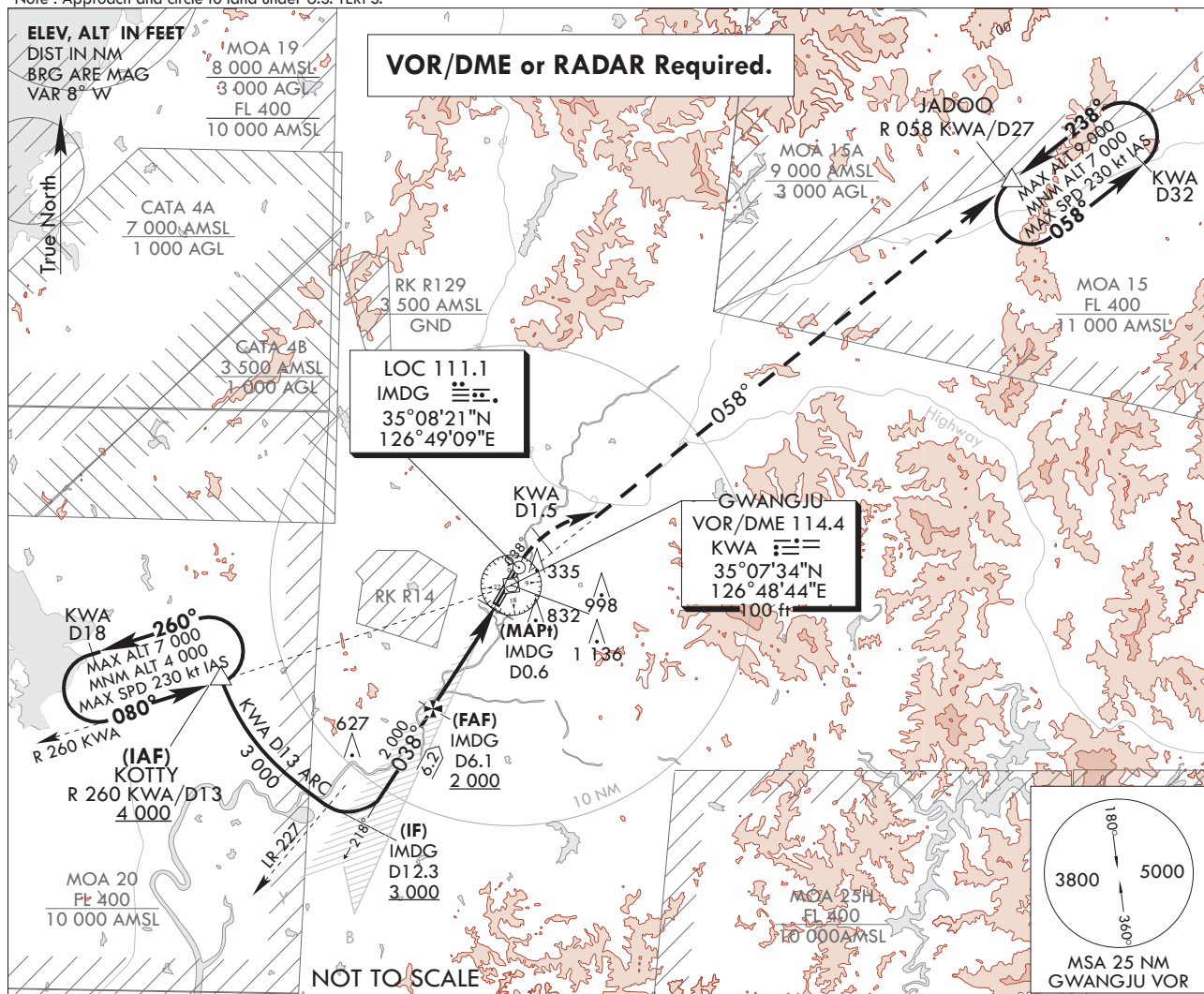
**INSTRUMENT  
APPROACH  
CHART**

**AERODROME ELEV 48 ft**  
HEIGHTS RELATE TO  
THR RWY 04R - ELEV 43 ft  
HIGHEST ELEV TDZ 46 ft

GWANGJU APP 130.0  
228.9  
GWANGJU TWR 118.05  
254.6

**GWANGJU/Gwangju(RKJJ)  
LOC/DME RWY 04R**

Note : Approach and circle to land under U.S. TERPS.

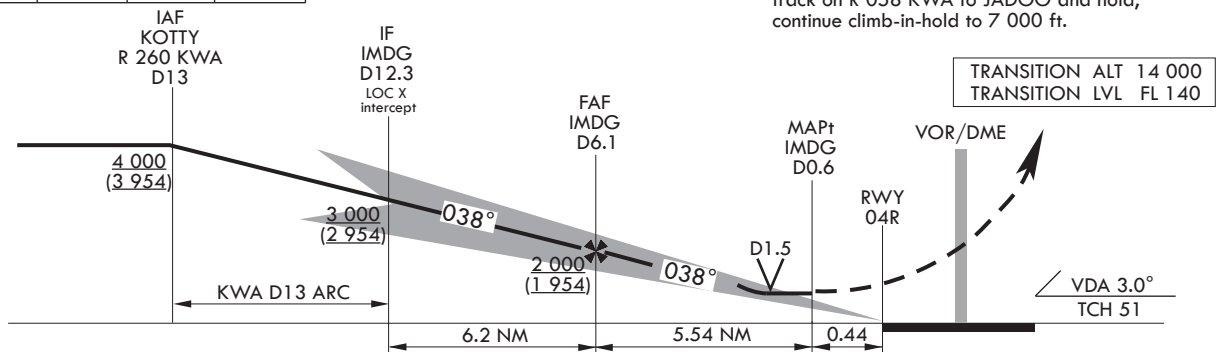


7 000  
↑  
HDG 038°

R 058 KWA  
JADOO KWA D27

Use IMDG DME when on the LOC course.

**MISSED APPROACH**  
Climb to 7 000 ft on HDG 038° to KWA D1.5, and climbing right turn to intercept R 058 KWA and track on R 058 KWA to JADOO and hold, continue climb-in-hold to 7 000 ft.



CATEGORY	A	B	C	D
S-LOC 04R	520/40 474(500-3/4)		520/50 474(500-1)	
S-LOC 04R (ALS INOP)	520/55 474(500-1)		520-1 3/8 474(500-1 3/8)	
CIRCLING*	720-1 672(700-1)	1 140-1 1/2 1 092(1 100-1 1/2)	1 140-3 1 092(1 100-3)	1 380-3 1 332(1 400-3)

\* Circling not authorized for west of RWY 04-22.

Change : Page control.

**INTENTIONALLY**

**LEFT**

**BLANK**

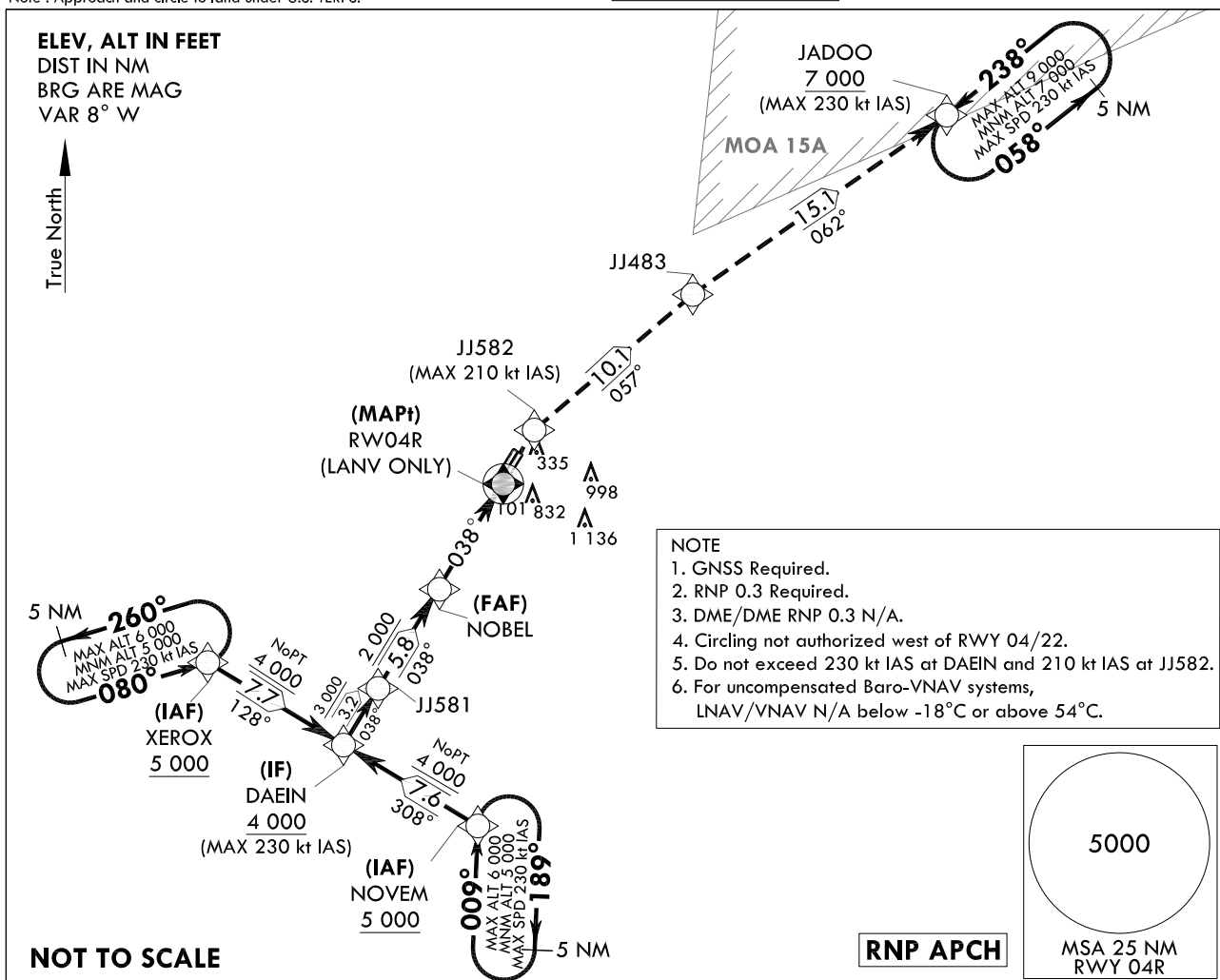





**AERODROME ELEV 48 ft**  
HEIGHTS RELATED TO  
THR RWY 04R - ELEV **43 ft**  
HIGHEST ELEV TDZ **46 ft**

Note : Approach and circle to land under U.S. TERPS.

GWANGJU APP	130.0
	228.9
GWANGJU TWR	118.05
	254.6

**GWANGJU/Gwangju(RKJJ)**  
**RNP RWY 04R**

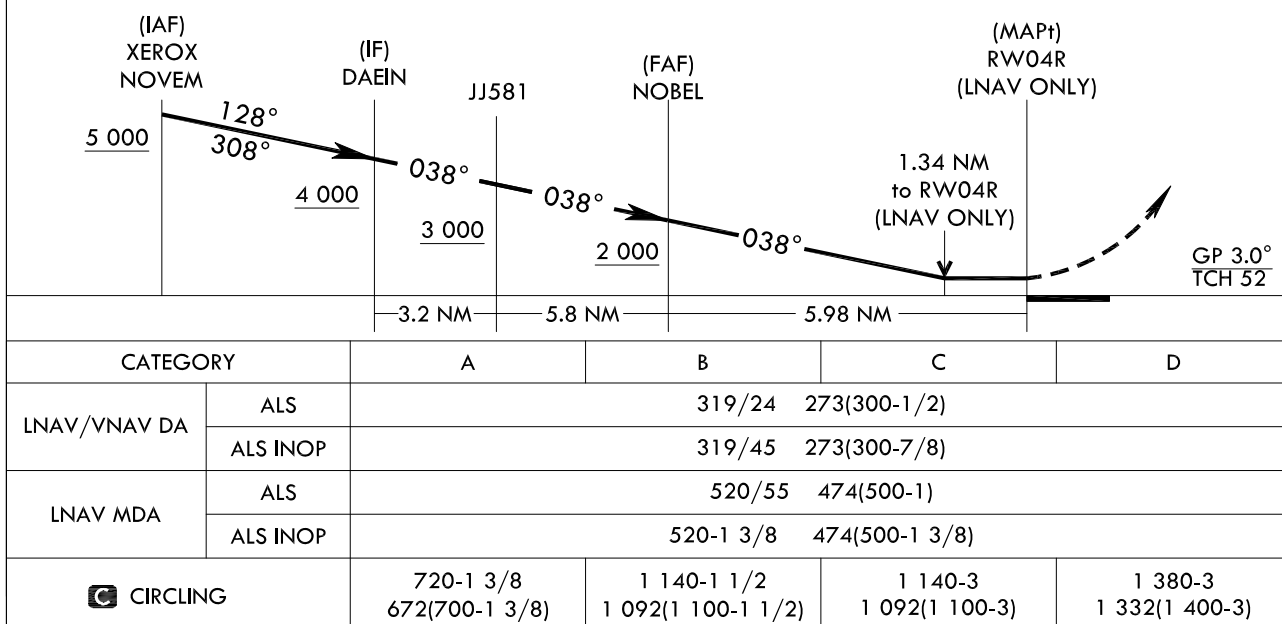


7 000	JJ582	TR 057°	JJ483	TR 062°	JAD00
					
					7 000

### MISSED APPROACH

Climb to 7 000 ft on direct to JJ582 and track 057° to JJ483 and track 062° to JADOO and hold, continue climb-in-hold to 7 000 ft.

TRANSITION	ALT	14 000
TRANSITION	LVL	FL 140



GWANGJU/Gwangju(RKJJ)  
RNP RWY 04R

## AERONAUTICAL DATA TABULATION

## Instrument Approach Procedure Coding Tables

RNP RWY 04R - via XEROX to DAEIN(IF)

Serial Number	Path Descriptor	Waypoint Identifier	Fly-over	Course/Track M(°T)	Distance (NM)	Turn direction	Altitude (ft)	Speed (kt)	Coordinates	VPA/TCH	Navigation specification	Remarks
001	IF	XEROX	-	-	-	-	+5 000	-230	34°57'41.4"N 126°30'53.8"E	-	RNP APCH	IAF
002	TF	DAEIN	-	128 (119.8)	7.7	-	+4 000	-230	34°53'51.4"N 126°39'01.7"E	-	RNP APCH	IF NoPT

RNP RWY 04R - via NOVEN to DAEIN(IF)

Serial Number	Path Descriptor	Waypoint Identifier	Fly-over	Course/Track M(°T)	Distance (NM)	Turn direction	Altitude (ft)	Speed (kt)	Coordinates	VPA/TCH	Navigation specification	Remarks
001	IF	NOVEN	-	-	-	-	+5 000	-230	34°50'04.0"N 126°47'02.3"E	-	RNP APCH	IAF
002	TF	DAEIN	-	308 (299.9)	7.6	-	+4 000	-230	34°53'51.4"N 126°39'01.7"E	-	RNP APCH	IF NoPT

RNP RWY 04R - via DAEIN(IF) to MAHF

Serial Number	Path Descriptor	Waypoint Identifier	Fly-over	Course/Track M(°T)	Distance (NM)	Turn direction	Altitude (ft)	Speed (kt)	Coordinates	VPA/TCH	Navigation specification	Remarks
001	TF	DAEIN	-	-	-	-	+4 000	-230	34°53'51.4"N 126°39'01.7"E	-	RNP APCH	IF
002	TF	JJ581	-	038 (029.8)	3.2	-	+3 000	-	34°56'38.2"N 126°40'57.9"E	-	RNP APCH	-
003	TF	NOBEL	-	038 (029.9)	5.8	-	+2 000	-	35°01'41.5"N 126°44'29.5"E	-3.0/52	RNP APCH	FAF
004	TF	RW04R	Y	038 (029.9)	6.0	-	-	-	35°06'53.1"N 126°48'07.4"E	-	RNP APCH	MAPt LNAV ONLY
005	DF	JJ582	-	-	-	-	-	-210	35°09'21.0"N 126°49'51.1"E	-	RNP APCH	-
006	TF	JJ483	-	057 (048.2)	10.1	-	-	-	35°16'05.6"N 126°59'03.3"E	-	RNP APCH	-
007	TF	JADOO	-	062 (053.6)	15.1	-	+7 000	-230	35°25'02.6"N 127°13'54.1"E	-	RNP APCH	-

## HOLDING PROCEDURE

Holding Identification	Path Descriptor	Waypoint Identifier	Fly-over	Course/Track M(°T)	Distance (NM)	Turn direction	Altitude (ft)	Speed (kt)	Coordinates	VPA/TCH	Navigation specification	Remarks
RNP RWY 04R	HM	NOVEN	-	009 (000.6)	5.0	R	-6 000 +5 000	-230	34°50'04.0"N 126°47'02.3"E	-	RNAV 1	-
	HM	XEROX	-	080 (071.6)	5.0	L	-6 000 +5 000	-230	34°57'41.4"N 126°30'53.8"E	-	RNAV 1	-
	HM	JADOO	-	238 (229.6)	5.0	L	-9 000 +7 000	-230	35°25'02.6"N 127°13'54.1"E	-	RNAV 1	-

Change : Establishment of holding procedure.

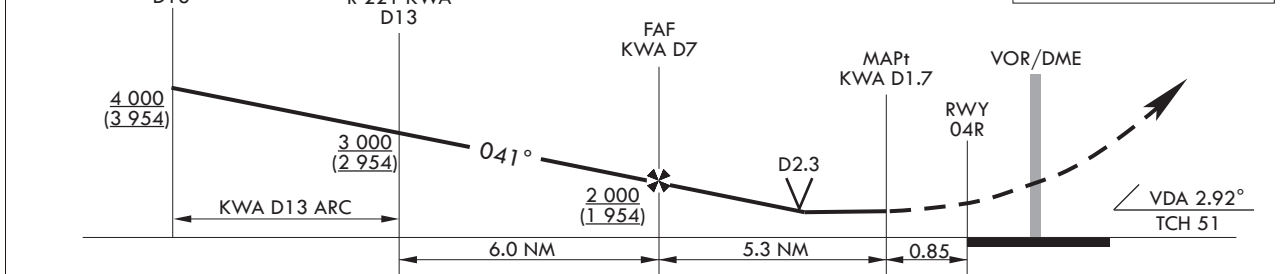
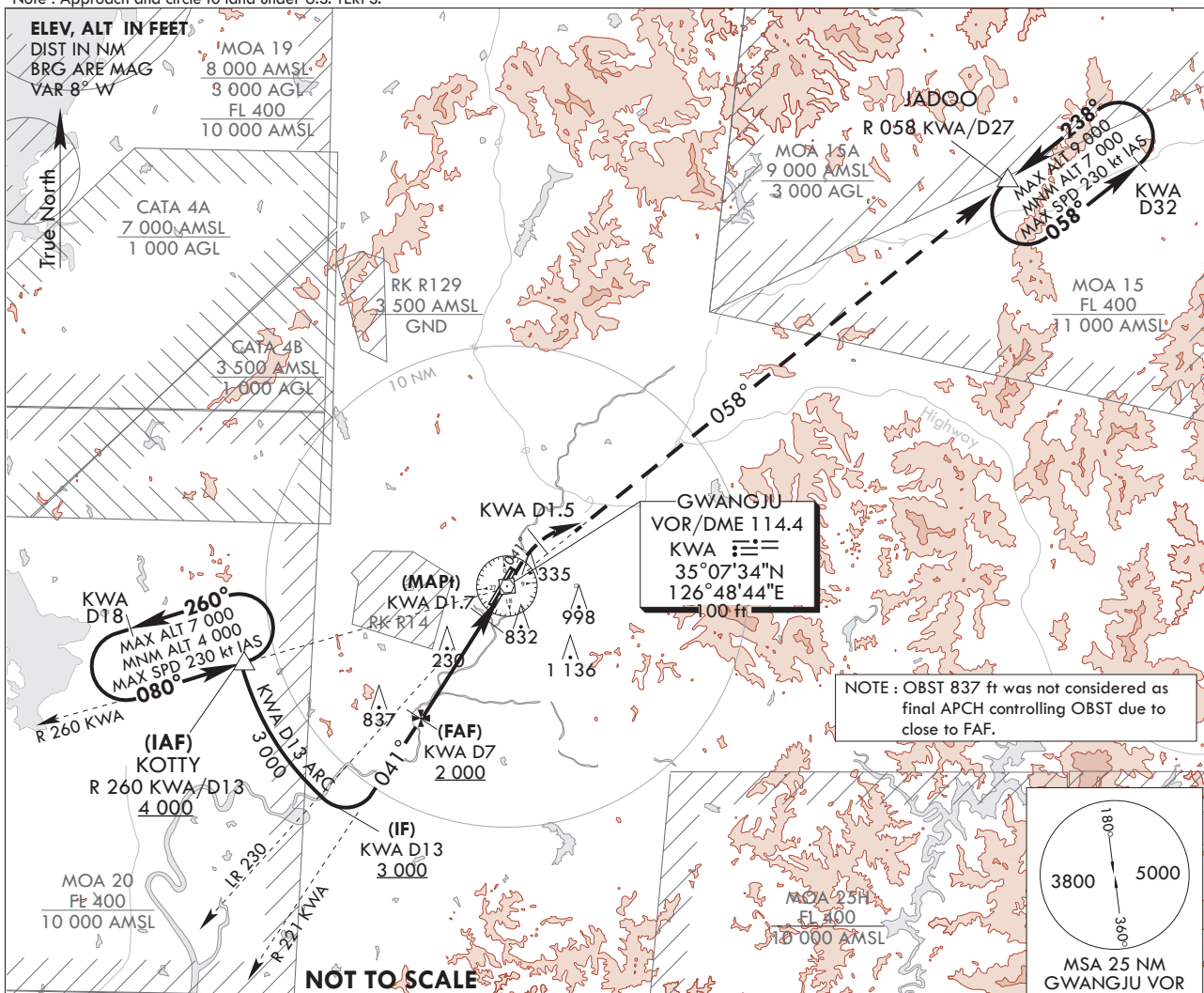
**INSTRUMENT  
APPROACH  
CHART**

**AERODROME ELEV 48 ft**  
HEIGHTS RELATE TO  
THR RWY 04R - ELEV 43 ft  
HIGHEST ELEV TDZ 46 ft

GWANGJU APP 130.0  
GWANGJU TWR 228.9  
GWANGJU TWR 118.05  
254.6

**GWANGJU/Gwangju(RKJJ)  
VOR/DME RWY 04R**

Note : Approach and circle to land under U.S. TERPS.



CATEGORY	A	B	C	D
S-VOR 04R	560/40 514(600-3/4)		560/55 514(600-1)	
S-VOR 04R (ALS INOP)	560/55 514(600-1)		560-1 3/8 514(600-1 3/8)	
CIRCLING*	720-1 672(700-1)	1 140-1 1/2 1 092(1 100-1 1/2)	1 140-3 1 092(1 100-3)	1 380-3 1 332(1 400-3)

\* Circling not authorized for west of RWY 04-22.

Change : Page control.

**INTENTIONALLY**

**LEFT**

**BLANK**

**INSTRUMENT  
APPROACH  
CHART**

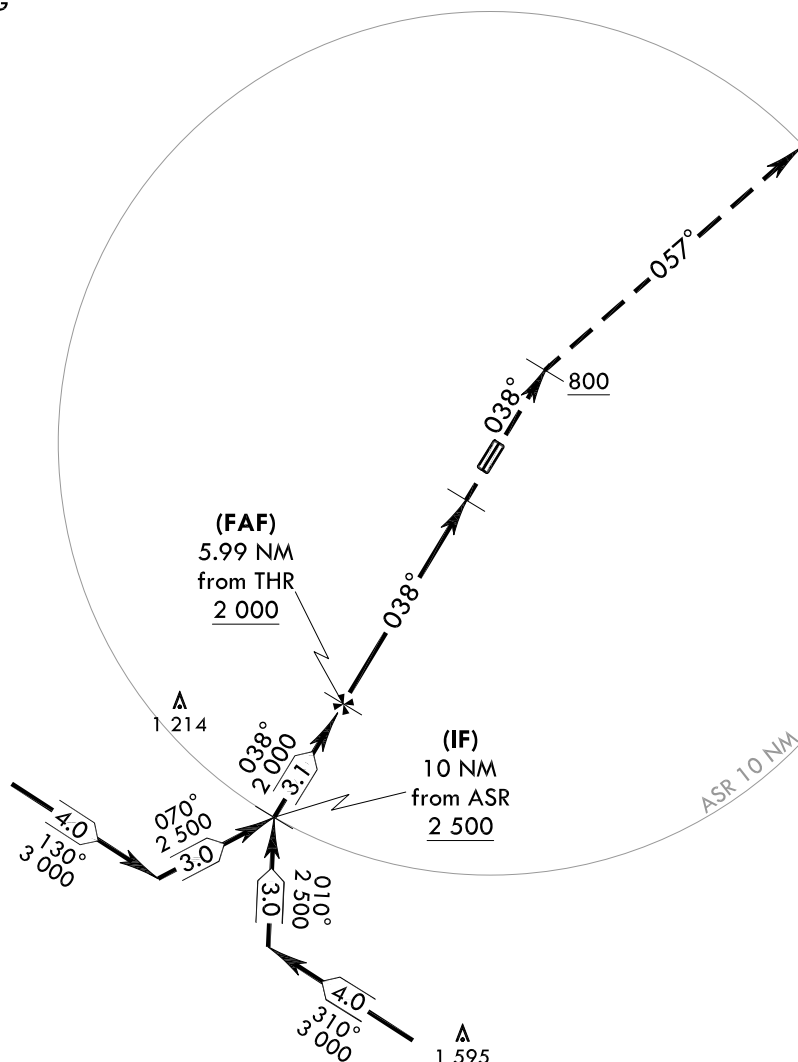
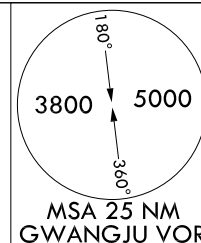
**AERODROME ELEV 48 ft**  
HEIGHTS RELATED TO  
THR RWY 04R - ELEV **43 ft**  
HIGHEST ELEV TDZ **46 ft**

GWANGJU APP 130.0  
228.9  
GWANGJU TWR 118.05  
254.6

**GWANGJU/Gwangju(RKJJ)**  
**PAR RWY 04R**

Note : Approach and circle to land under U.S. TERPS.

**ELEV, ALT IN FEET**  
**DIST IN NM**  
**BRG ARE MAG**  
**VAR 8° W**

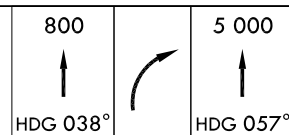


**NOT TO SCALE**

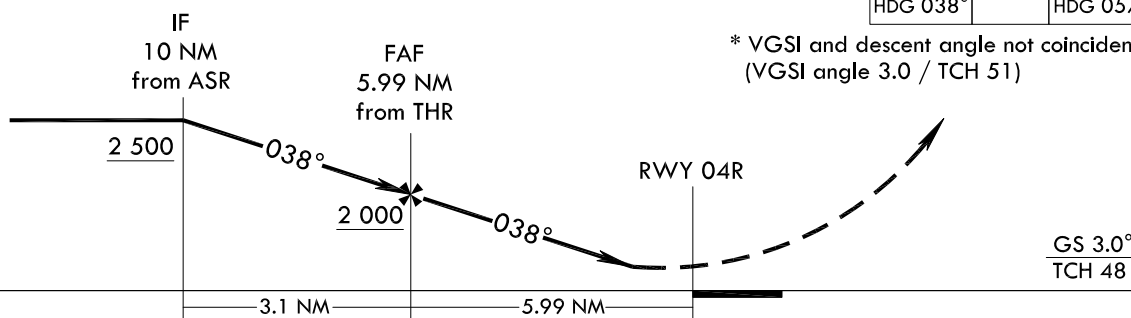
**MISSED APPROACH**

Climb HDG 038° to 800 ft, then climbing right turn HDG 057° maintain 5 000 ft and assigned HDG for radar vector.

TRANSITION ALT 14 000  
TRANSITION LVL FL 140



\* VGSI and descent angle not coincident.  
(VGSI angle 3.0 / TCH 51)



CATEGORY	A	B	C	D	E
S-PAR 04R		246/24	200(200-1/2)		
S-PAR 04R (ALS INOP)		246/40	200(200-3/4)		

\* Circling not authorized.

Change : Page control.

**OFFICE OF CIVIL AVIATION**

**AIRAC AIP AMDT 1/23**  
**Effective : 1600UTC 22 FEB 2023**

**INTENTIONALLY**

**LEFT**

**BLANK**

**INSTRUMENT  
APPROACH  
CHART**

**AERODROME ELEV 48 ft**  
HEIGHTS RELATED TO  
THR RWY 04R - ELEV **43 ft**  
HIGHEST ELEV TDZ **46 ft**

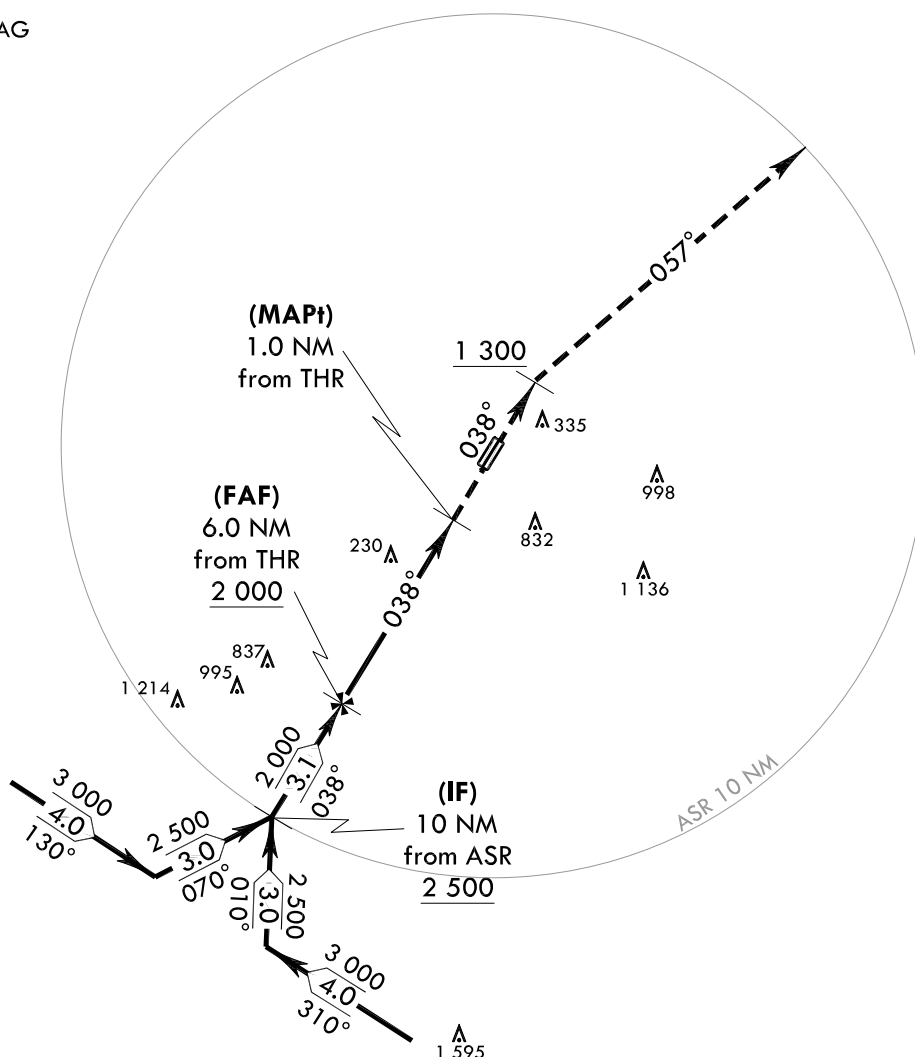
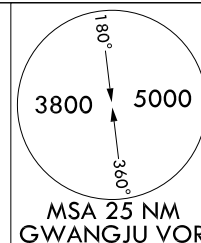
GWANGJU APP 130.0  
228.9  
GWANGJU TWR 118.05  
254.6

**GWANGJU/Gwangju(RKJJ)**  
**ASR RWY 04R**

Note : Approach and circle to land under U.S. TERPS.

**ELEV, ALT IN FEET**

**DIST IN NM**  
**BRG ARE MAG**  
**VAR 8° W**



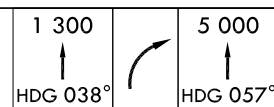
**NOTE :**  
OBST 837 ft was not considered as final APCH controlling OBST due to close to FAF.

**NOT TO SCALE**

**MISSED APPROACH**

Climb HDG 038° to 1 300 ft, then climbing right turn HDG 057° maintain 5 000 ft and assigned HDG for radar vector.

TRANSITION ALT 14 000  
TRANSITION LVL FL 140



	IF 10 NM from ASR 2 500		FAF 6.0 NM from THR 2 000		MAPt 1.0 NM from THR		RWY 04R	
	038°		038°		057°		VDA 2.99° TCH 51	
	3.1 NM		5.0 NM		1.0 NM			
CATEGORY	A		B		C		D	
S-ASR 04R	560/40		514(600-3/4)		560/55		514(600-1)	
S-ASR 04R (ALS INOP)	560/60		514(600-1 1/4)		560-1 3/8		514(600-1 3/8)	
CIRCLING*	720-1 1/4 672(700-1 1/4)		1 140-1 1/2 1 092(1 100-1 1/2)		1 140-3 1 092(1 100-3)		1 380-3 1 332(1 400-3)	
							1 460-3 1 412(1 500-3)	

\* Circling not authorized for west of RWY 04-22.

Change : Page control.

**OFFICE OF CIVIL AVIATION**

**AIRAC AIP AMDT 1/23**  
**Effective : 1600UTC 22 FEB 2023**



**INTENTIONALLY**

**LEFT**

**BLANK**

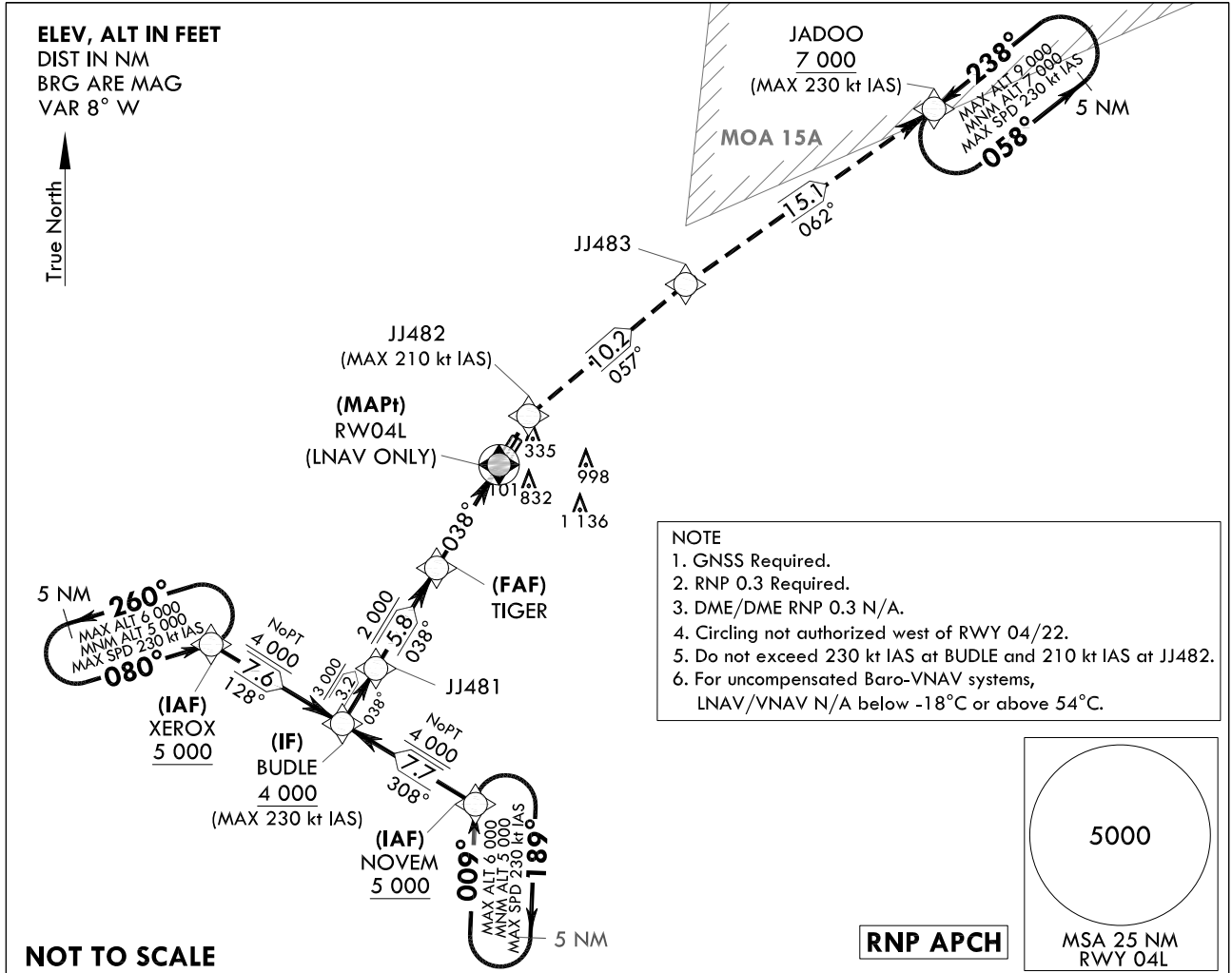
**INSTRUMENT  
APPROACH  
CHART**

**AERODROME ELEV 48 ft**  
HEIGHTS RELATED TO  
THR RWY 04L - ELEV 44 ft  
HIGHEST ELEV TDZ 46 ft

GWANGJU APP 130.0  
228.9  
GWANGJU TWR 118.05  
254.6

**GWANGJU/Gwangju(RKJJ)**  
**RNP RWY 04L**

Note : Approach and circle to land under U.S. TERPS.



7 000	JJ482	TR	JJ483	TR	JADOO
↑	◆	057°	◆	062°	◆
					7 000

**MISSED APPROACH**

Climb to 7 000 ft on direct to JJ482 and track 057° to JJ483 and track 062° to JADOO and hold, continue climb-in-hold to 7 000 ft.

TRANSITION ALT 14 000  
TRANSITION LVL FL 140

<p>(IAF) XEROX NOVEM</p> <p>5 000</p>		<p>(IF) BUDLE</p> <p>4 000</p>	<p>JJ481</p> <p>3 000</p>	<p>(FAF) TIGER</p> <p>2 000</p>	<p>(MAPt) RW04L (LNAV ONLY)</p> <p>1.33 NM to RW04L (LNAV ONLY)</p>	<p>GP 3.0° TCH 52</p>
<p>128° 308°</p>		<p>038°</p>	<p>038°</p>	<p>038°</p>		
<p>3.2 NM</p>		<p>5.8 NM</p>	<p>5.98 NM</p>			
CATEGORY		A	B		C	D
LNAV/VNAV DA	ALS	319/24 273(300-1/2)				
	ALS INOP	319/45 273(300-7/8)				
LNAV MDA	ALS	520/50 474(500-1)				
	ALS INOP	520-1 3/8 474(500-1 3/8)				
CIRCLING		720-1 3/8 672(700-1 3/8)	1 140-1 1/2 1 092(1 100-1 1/2)	1 140-3 1 092(1 100-3)	1 380-3 1 332(1 400-3)	

GWANGJU/Gwangju(RKJJ)  
RNP RWY 04L

## AERONAUTICAL DATA TABULATION

## Instrument Approach Procedure Coding Tables

## RNP RWY 04L - via XEROX to BUDLE(IF)

Serial Number	Path Descriptor	Waypoint Identifier	Fly- over	Course/Track M(°T)	Distance (NM)	Turn direction	Altitude (ft)	Speed (kt)	Coordinates	VPA/ TCH	Navigation specification	Remarks
001	IF	XEROX	-	-	-	-	+5 000	-230	34°57'41.4"N 126°30'53.8"E	-	RNP APCH	IAF
002	TF	BUDLE	-	128 (119.8)	7.6	-	+4 000	-230	34°53'54.5"N 126°38'55.1"E	-	RNP APCH	IF NoPT

## RNP RWY 04L - via NOVEM to BUDLE(IF)

Serial Number	Path Descriptor	Waypoint Identifier	Fly- over	Course/Track M(°T)	Distance (NM)	Turn direction	Altitude (ft)	Speed (kt)	Coordinates	VPA/ TCH	Navigation specification	Remarks
001	IF	NOVEM	-	-	-	-	+5 000	-230	34°50'04.0"N 126°47'02.3"E	-	RNP APCH	IAF
002	TF	BUDLE	-	308 (299.9)	7.7	-	+4 000	-230	34°53'54.5"N 126°38'55.1"E	-	RNP APCH	IF NoPT

## RNP RWY 04L - via BUDLE(IF) to MAHF

Serial Number	Path Descriptor	Waypoint Identifier	Fly- over	Course/Track M(°T)	Distance (NM)	Turn direction	Altitude (ft)	Speed (kt)	Coordinates	VPA/ TCH	Navigation specification	Remarks
001	TF	BUDLE	-	-	-	-	+4 000	-230	34°53'54.5"N 126°38'55.1"E	-	RNP APCH	IF
002	TF	JJ481	-	038 (029.8)	3.2	-	+3 000	-	34°56'41.3"N 126°40'51.3"E	-	RNP APCH	-
003	TF	TIGER	-	038 (029.9)	5.8	-	+2 000	-	35°01'44.8"N 126°44'23.0"E	-3.0/52	RNP APCH	FAF
004	TF	RW04L	Y	038 (029.9)	6.0	-	-	-	35°06'56.2"N 126°48'00.8"E	-	RNP APCH	MAPt LNAV ONLY
005	DF	JJ482	-	-	-	-	-	-210	35°09'23.8"N 126°49'44.2"E	-	RNP APCH	-
005	TF	JJ483	-	057 (048.7)	10.2	-	-	-	35°16'05.6"N 126°59'03.3"E	-	RNP APCH	-
006	TF	JADOO	-	062 (053.6)	15.1	-	+7 000	-230	35°25'02.6"N 127°13'54.1"E	-	RNP APCH	-

## HOLDING PROCEDURE

Holding Identification	Path Descriptor	Waypoint Identifier	Fly- over	Course/Track M(°T)	Distance (NM)	Turn direction	Altitude (ft)	Speed (kt)	Coordinates	VPA/ TCH	Navigation specification	Remarks
RNP RWY 04L	HM	NOVEM	-	009 (000.6)	5.0	R	-6 000 +5 000	-230	34°50'04.0"N 126°47'02.3"E	-	RNAV 1	-
	HM	XEROX	-	080 (071.6)	5.0	L	-6 000 +5 000	-230	34°57'41.4"N 126°30'53.8"E	-	RNAV 1	-
	HM	JADOO	-	238 (229.6)	5.0	L	-9 000 +7 000	-230	35°25'02.6"N 127°13'54.1"E	-	RNAV 1	-

Change : Establishment of holding procedure.

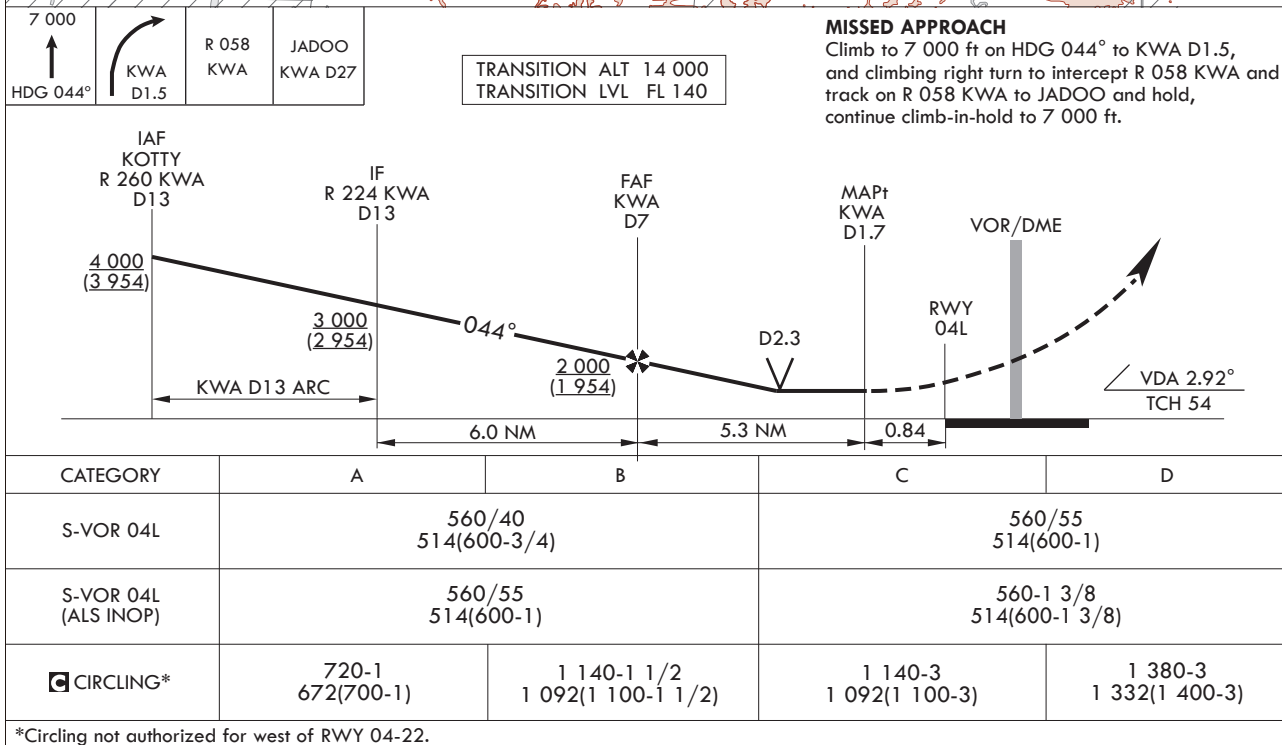
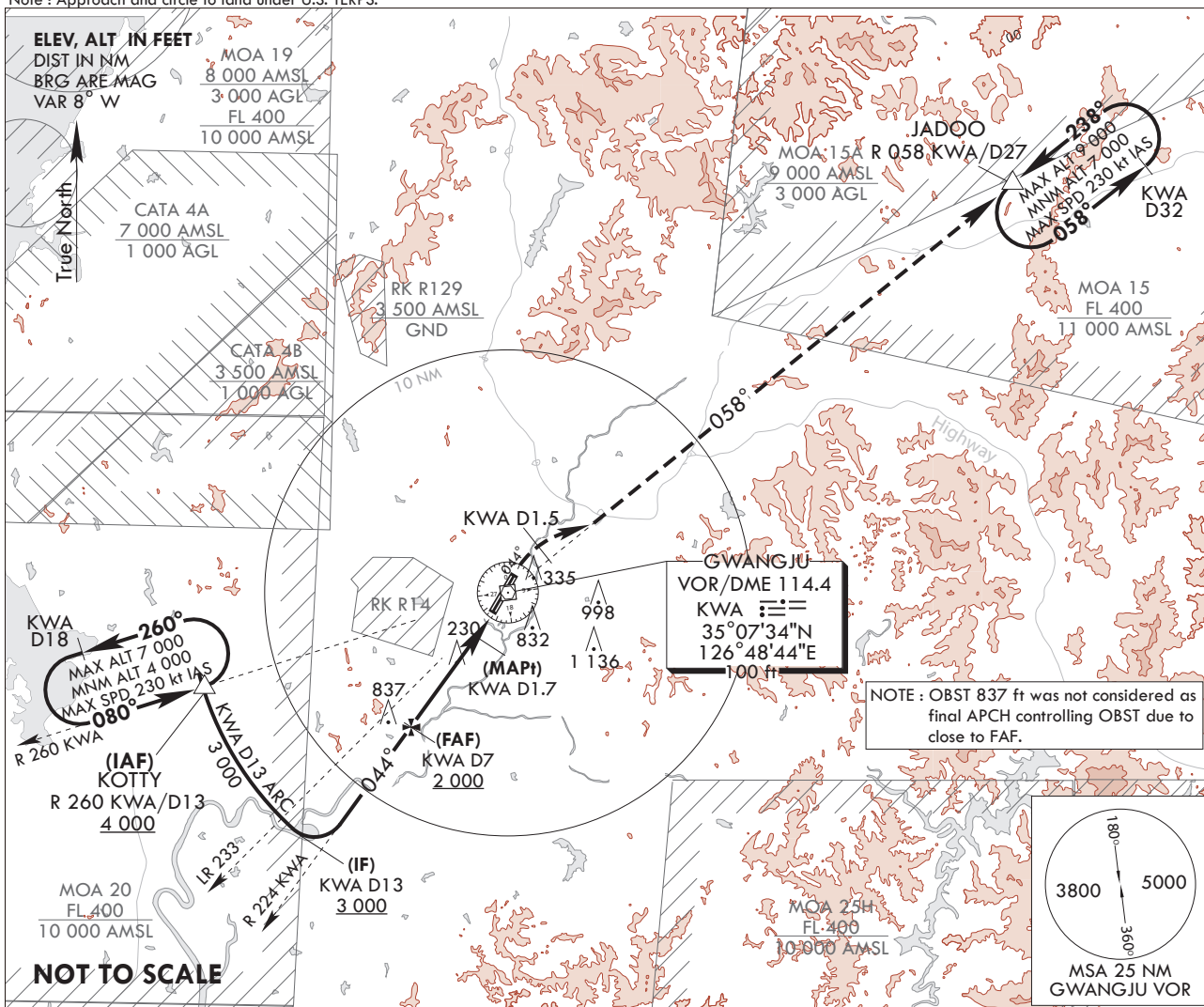
**INSTRUMENT  
APPROACH  
CHART**

**AERODROME ELEV 48 ft**  
HEIGHTS RELATE TO  
THR RWY 04L - ELEV **44 ft**  
HIGHEST ELEV TDZ **46 ft**

GWANGJU APP 130.0  
228.9  
GWANGJU TWR 118.05  
254.6

**GWANGJU/Gwangju(RKJJ)**  
**VOR/DME RWY 04L**

Note : Approach and circle to land under U.S. TERPS.



Change : Page control.

**INTENTIONALLY**

**LEFT**

**BLANK**

**AERODROME ELEV 48 ft**  
 HEIGHTS RELATED TO  
 THR RWY 04L - ELEV **44 ft**  
 HIGHEST ELEV TDZ **46 ft**

GWANGJU APP	130.0
	228.9
GWANGJU TWR	118.05
	254.6

**GWANGJU/Gwangju(RKJJ)**  
**PAR RWY 04L**

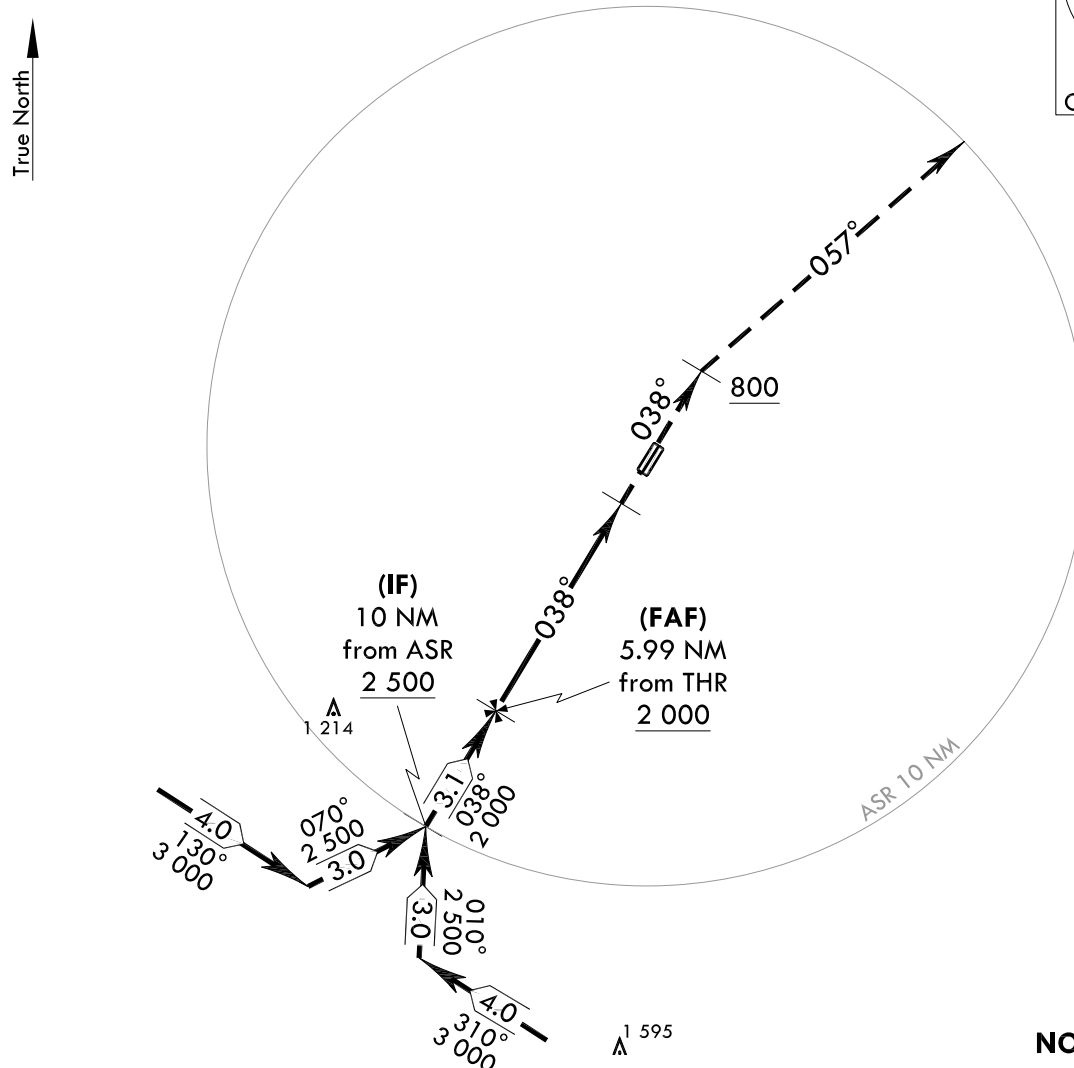
Note : Approach and circle to land under U.S. TERPS.

180°

3800 5000

360°

MSA 25 NM  
GWANGJU VOR

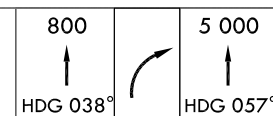


**NOT TO SCALE**

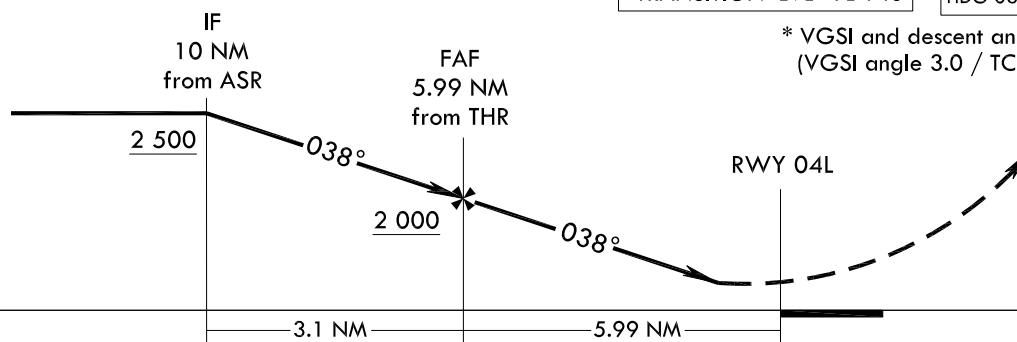
### MISSED APPROACH

Climb HDG 038° to 800 ft, then climbing right turn HDG 057° maintain 5 000 ft and assigned HDG for radar vector.

TRANSITION	ALT	14 000
TRANSITION	LVL	FL 140



\* VGSI and descent angle not coincident.  
(VGSI angle 3.0 / TCH 54)



CATEGORY	A	B	C	D	E
S-PAR 04L	246/24		200(200-1/2)		
S-PAR 04L (ALS INOP)	246/40		200(200-3/4)		

\* Circling not authorized.

Change : Page control.

OFFICE OF CIVIL AVIATION

**AIRAC AIP AMDT 1/23**  
**Effective : 1600UTC 22 FEB 2023**

**INTENTIONALLY**

**LEFT**

**BLANK**



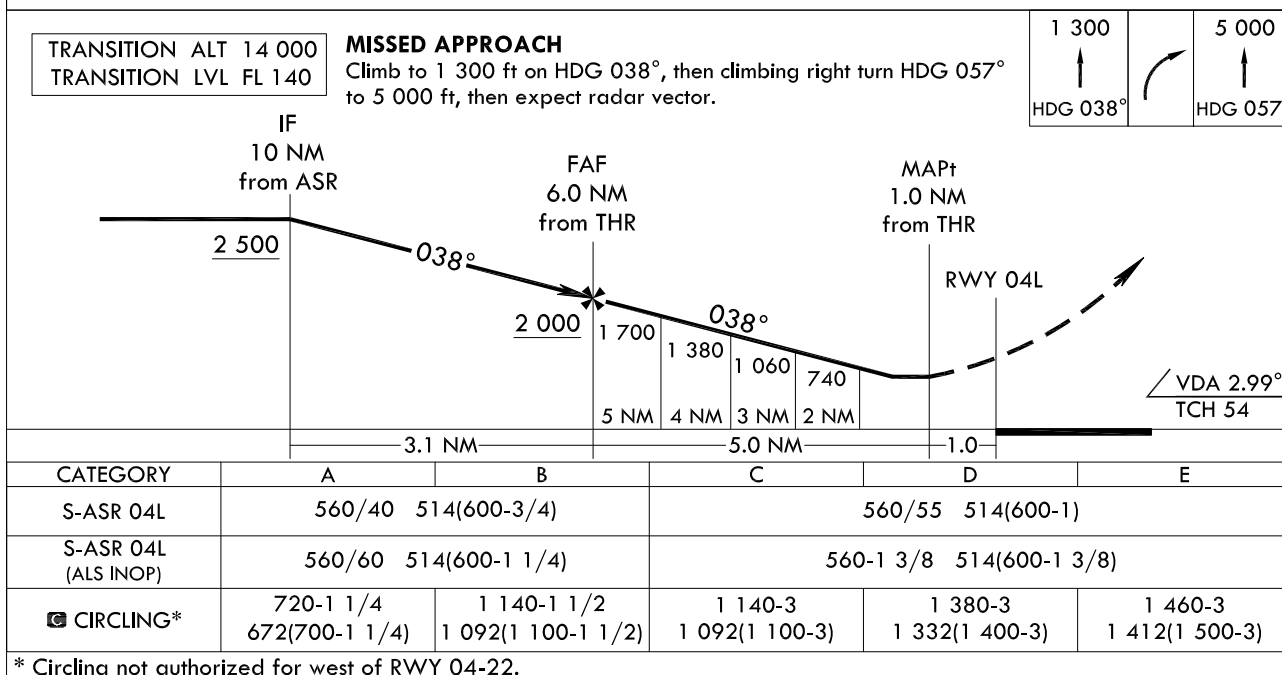
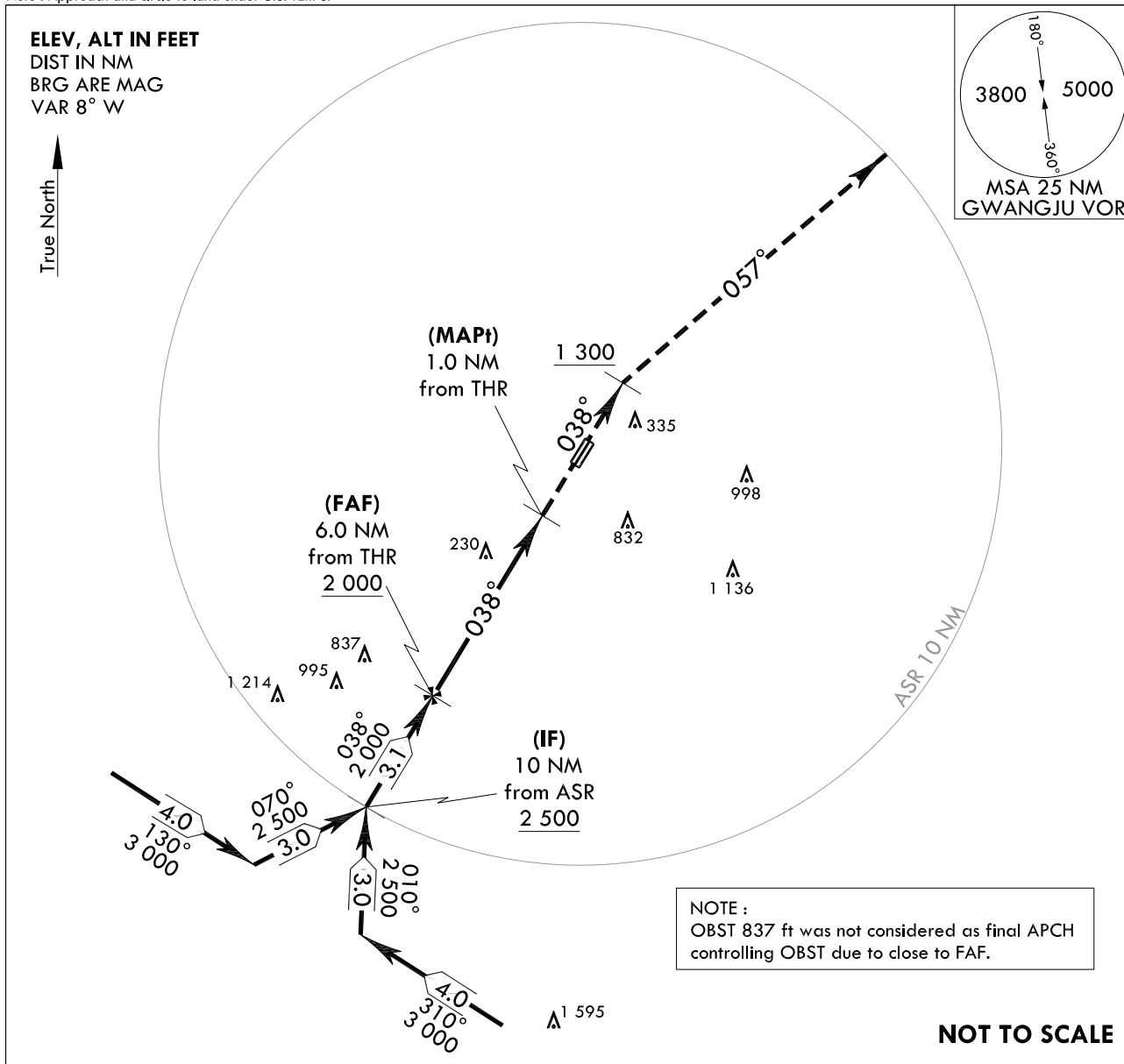
**INSTRUMENT  
APPROACH  
CHART**

**AERODROME ELEV 48 ft**  
HEIGHTS RELATED TO  
THR RWY 04L - ELEV **44 ft**  
HIGHEST ELEV TDZ **46 ft**

GWANGJU APP 130.0  
228.9  
GWANGJU TWR 118.05  
254.6

**GWANGJU/Gwangju(RKJJ)**  
**ASR RWY 04L**

Note : Approach and circle to land under U.S. TERPS.



\* Circling not authorized for west of RWY 04-22.

Change : Page control.

**OFFICE OF CIVIL AVIATION**

**AIRAC AIP AMDT 1/23**  
**Effective : 1600UTC 22 FEB 2023**

**INTENTIONALLY**

**LEFT**

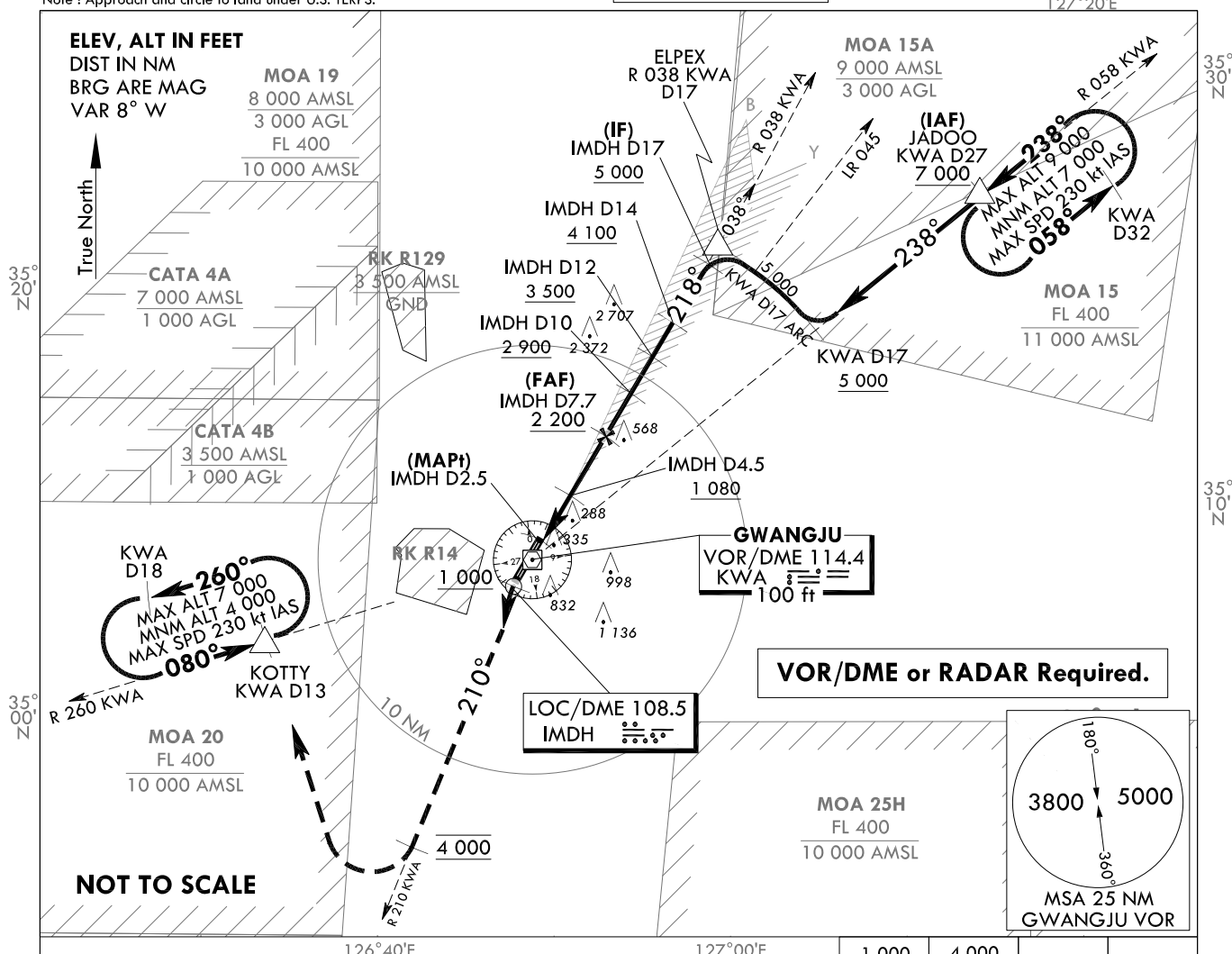
**BLANK**

**AERODROME ELEV 48 ft**  
HEIGHTS RELATED TO  
THR RWY 22L - ELEV **46 ft**  
HIGHEST ELEV TDZ **48 ft**

GWANGJU APP	130.0
	228.9
GWANGJU TWR	118.05
	254.6

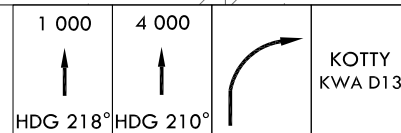
**GWANGJU/Gwangju(RKJJ)  
LOC/DME RWY 22L**

Note : Approach and circle to land under U.S. TERPS.



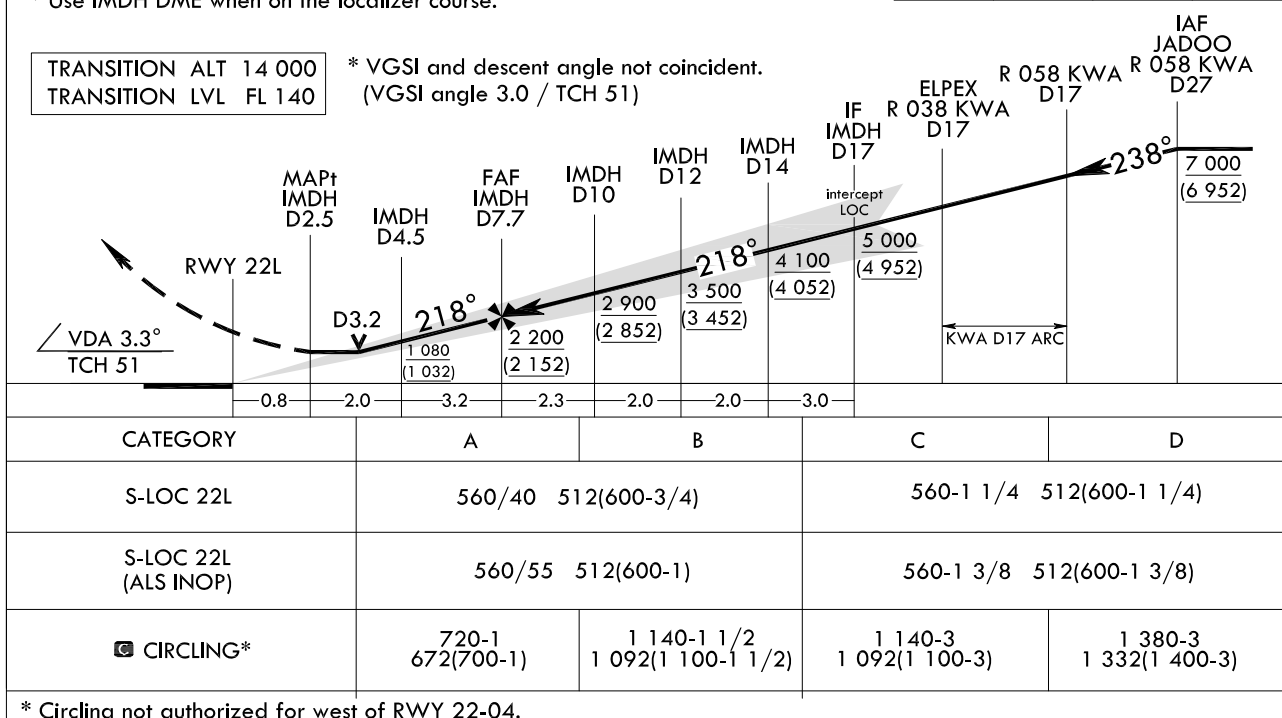
Climb to 1 000 ft on HDG 218°, then climbing left turn HDG 210° to 4 000 ft, then right turn direct to KOTTY and hold.

\* Use IMDH DME when on the localizer course.



TRANSITION	ALT	14 000
TRANSITION	LVL	FL 140

\* VGS1 and descent angle not coincident.  
(VGS1 angle 3.0 / TCH 51)



\* Circling not authorized for west of RWY 22-04.

Change : Page control.

**INTENTIONALLY**

**LEFT**

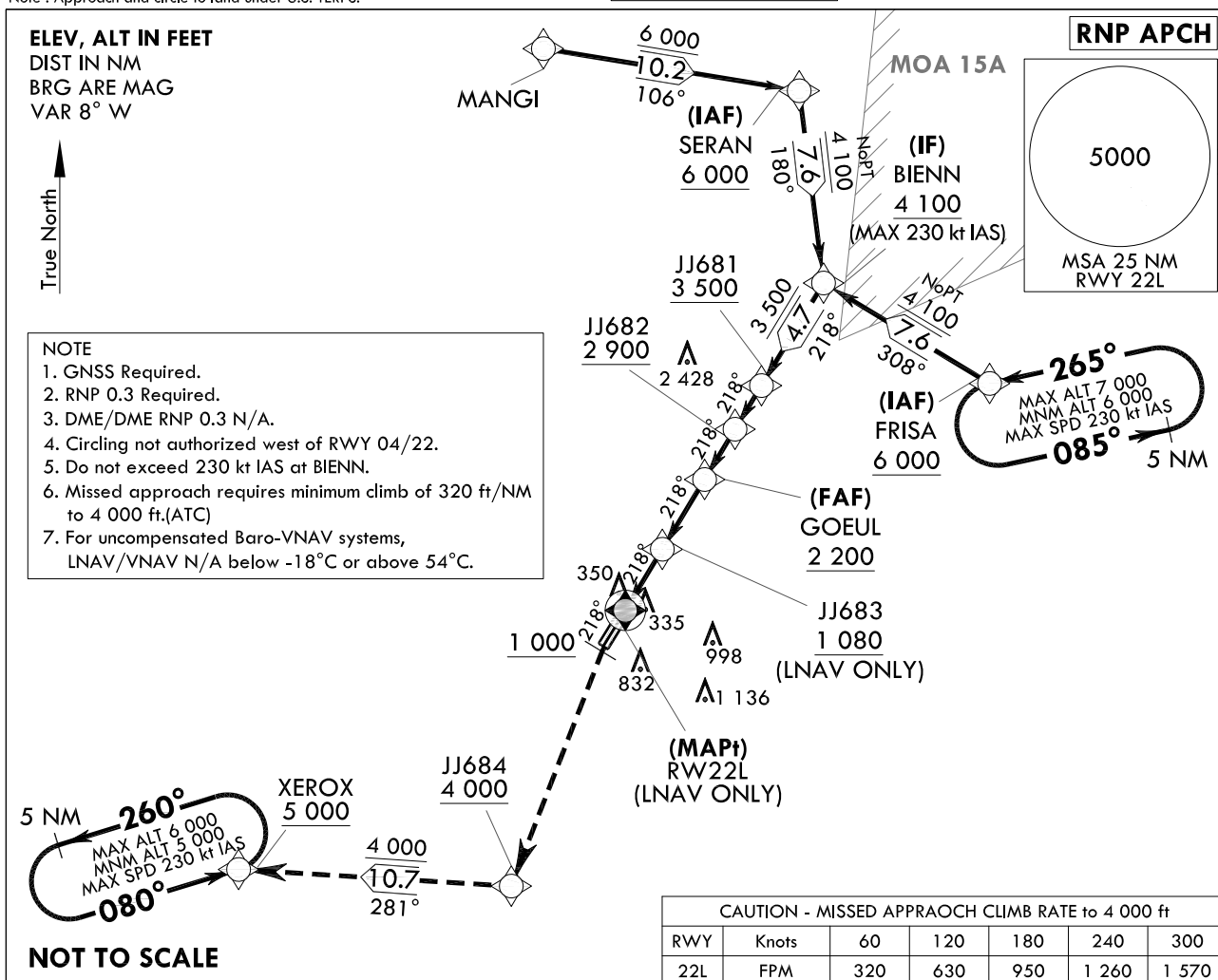
**BLANK**





**AERODROME ELEV 48 ft**  
HEIGHTS RELATED TO  
THR RWY 22L - ELEV **46 ft**  
HIGHEST ELEV TDZ **48 ft**

Note : Approach and circle to land under U.S. TERPS.

GWANGJU APP	130.0
	228.9
GWANGJU TWR	118.05
	254.6

**GWANGJU/Gwangju(RKJJ)**  
**RNP RWY 22L**

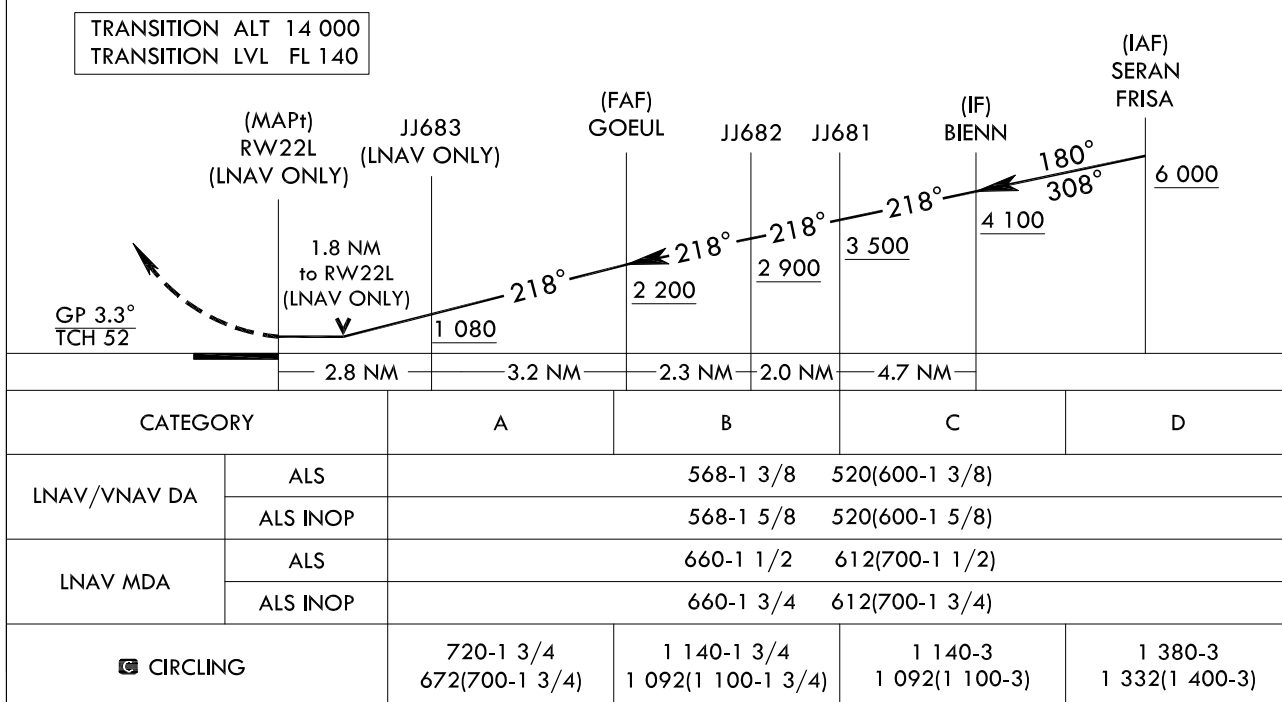


1 000	4 000	JJ684	TR 281°	XEROX
				
				5 000

### MISSED APPROACH

Climb HDG 218° to 1 000 ft, then climbing left turn direct to JJ684 at or above 4 000 ft, then track 281° to XEROX at or above 5 000 ft and hold.

\* VGSI and descent angle not coincident (VGSI Angle 3.0/TCH 51).



GWANGJU/Gwangju(RKJJ)  
RNP RWY 22L

## AERONAUTICAL DATA TABULATION

## Instrument Approach Procedure Coding Tables

Feeder Route - via MANGI to SERAN(IAF)

Serial Number	Path Descriptor	Waypoint Identifier	Fly- over	Course/ Track M(°T)	Distance (NM)	Turn direction	Altitude (ft)	Speed (kt)	Coordinates	VPA/ TCH	Navigation specification	Remarks
001	-	MANGI	-	-	-	-	-	-	35°30'11.3"N 126°44'31.7"E	-	RNAV 1	-
002	TF	SERAN	-	106 (098.0)	10.2	-	+6 000	-	35°28'45.5"N 126°56'50.7"E	-	RNAV 1	IAF

RNP RWY 22L - via SERAN to BIENN(IF)

Serial Number	Path Descriptor	Waypoint Identifier	Fly- over	Course/ Track M(°T)	Distance (NM)	Turn direction	Altitude (ft)	Speed (kt)	Coordinates	VPA/ TCH	Navigation specification	Remarks
001	IF	SERAN	-	-	-	-	+6 000	-230	35°28'45.5"N 126°56'50.7"E	-	RNP APCH	IAF
002	TF	BIENN	-	180 (171.6)	7.6	-	+4 100	-230	35°21'13.7"N 126°58'12.2"E	-	RNP APCH	IF NoPT

RNP RWY 22L - via FRISA to BIENN(IF)

Serial Number	Path Descriptor	Waypoint Identifier	Fly- over	Course/ Track M(°T)	Distance (NM)	Turn direction	Altitude (ft)	Speed (kt)	Coordinates	VPA/ TCH	Navigation specification	Remarks
001	IF	FRISA	-	-	-	-	+6 000	-230	35°17'25.0"N 127°06'14.5"E	-	RNP APCH	IAF
002	TF	BIENN	-	308 (300.1)	7.6	-	+4 100	-230	35°21'13.7"N 126°58'12.2"E	-	RNP APCH	IF NoPT

RNP RWY 22L - via BIENN(IF) to MAHF

Serial Number	Path Descriptor	Waypoint Identifier	Fly- over	Course/ Track M(°T)	Distance (NM)	Turn direction	Altitude (ft)	Speed (kt)	Coordinates	VPA/ TCH	Navigation specification	Remarks
001	TF	BIENN	-	-	-	-	+4 100	-230	35°21'13.7"N 126°58'12.2"E	-	RNP APCH	IF
002	TF	JJ681	-	218 (210.0)	4.7	-	+3 500	-	35°17'09.1"N 126°55'19.9"E	-	RNP APCH	-
003	TF	JJ682	-	218 (210.0)	2.0	-	+2 900	-	35°15'25.0"N 126°54'06.6"E	-	RNP APCH	-
004	TF	GOEUL	-	218 (210.0)	2.3	-	+2 200	-	35°13'25.3"N 126°52'42.5"E	-3.3/52	RNP APCH	FAF
005	TF	JJ683	-	218 (210.0)	3.2	-	+1 080	-	35°10'38.6"N 126°50'45.5"E	-	RNP APCH	LNAV ONLY
006	TF	RW22L	Y	218 (209.9)	2.8	-	-	-	35°08'12.8"N 126°49'03.3"E	-	RNP APCH	MAP LNAV ONLY
007	VA	1 000 ft	-	-	-	-	+1 000	-	-	-	RNP APCH	-
008	DF	JJ684	-	-	-	-	+4 000	-	34°57'17.9"N 126°43'53.3"E	-	RNP APCH	CG 320 ft/NM to 4 000 ft
009	TF	XEROX	-	281 (272.2)	10.7	-	+5 000	-	34°57'41.4"N 126°30'53.8"E	-	RNP APCH	-

## HOLDING PROCEDURE

Holding Identification	Path Descriptor	Waypoint Identifier	Fly- over	Course/ Track M(°T)	Distance (NM)	Turn direction	Altitude (ft)	Speed (kt)	Coordinates	VPA/ TCH	Navigation specification	Remarks
RNP RWY 22L	HM	FRISA	-	265 (256.6)	5.0	L	-7 000 +6 000	-230	35°17'25.0"N 127°06'14.5"E	-	RNAV 1	-
	HM	XEROX	-	080 (071.6)	5.0	L	-6 000 +5 000	-230	34°57'41.4"N 126°30'53.8"E	-	RNAV 1	-

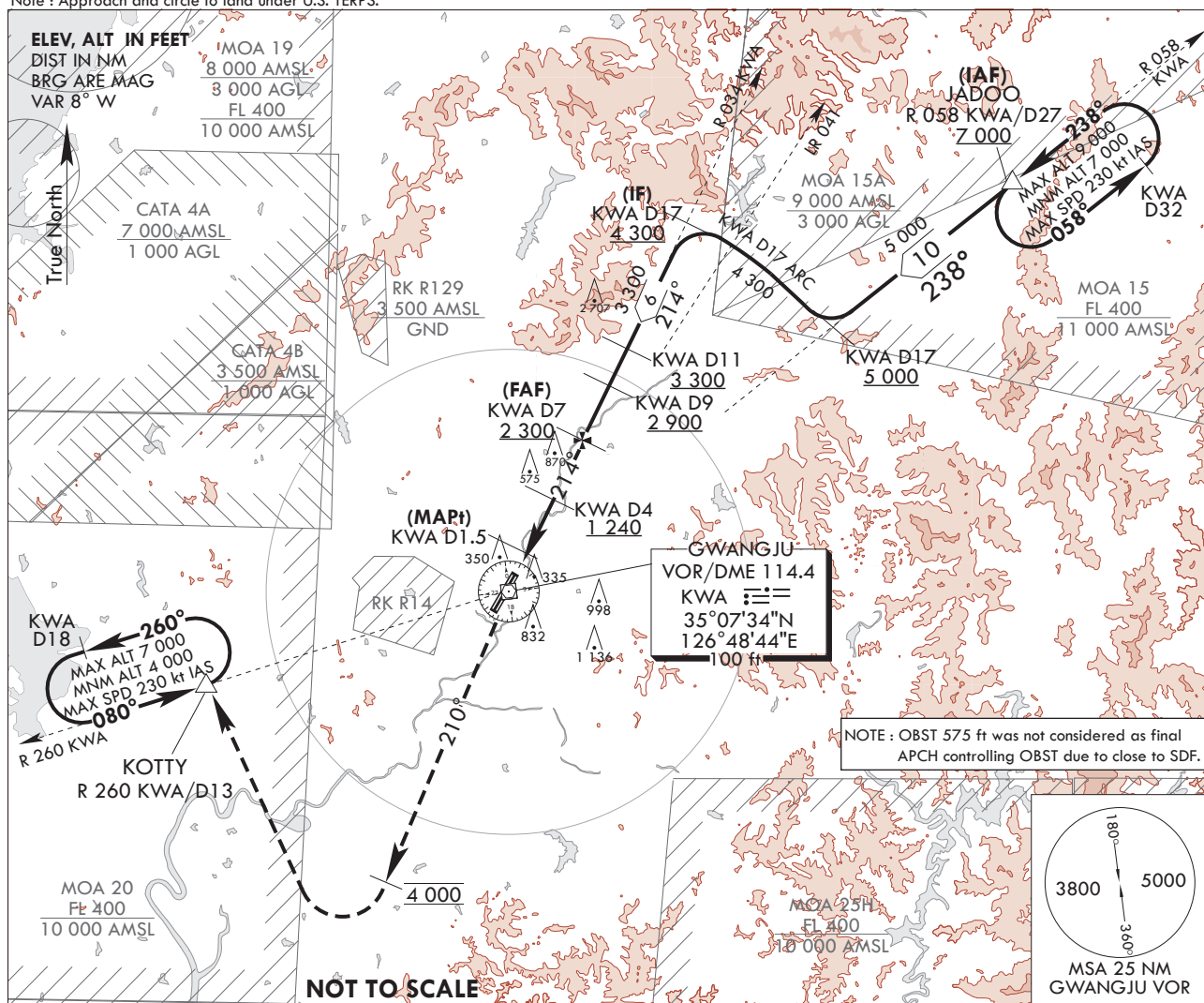
Change : Establishment of feeder route, holding procedure and Information of ALT restrictions for JJ684, XEROX.

**AERODROME ELEV 48 ft**  
HEIGHTS RELATE TO  
THR RWY 22L - ELEV **46 ft**  
HIGHEST ELEV TDZ **48 ft**

GWANGJU APP	130.0
	228.9
GWANGJU TWR	118.05
	254.6

**GWANGJU/Gwangju(RKJJ)**  
**VOR/DME RWY 22L**

Note : Approach and circle to land under U.S. TERPS.

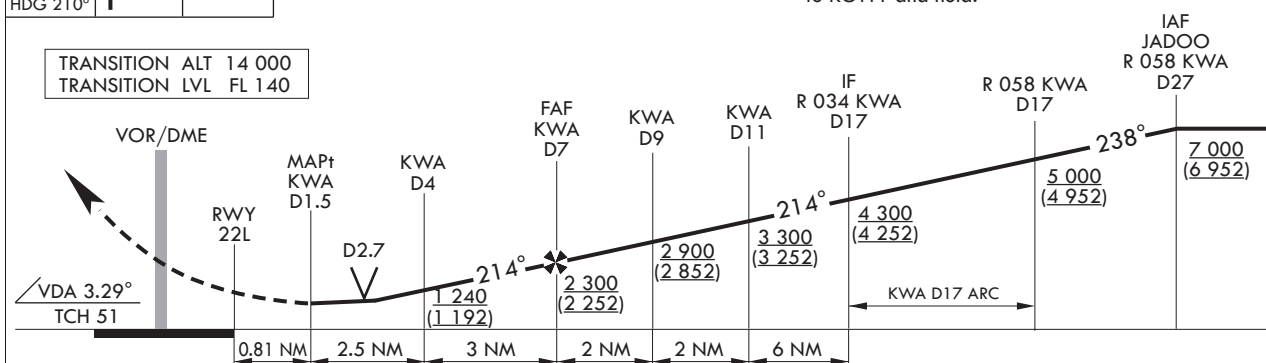



4 000 ↑ HDG 210°		KOTTY KWA D13
------------------------	--	------------------

\* VGSI and descent angle not coincident (VGSI angle 3.0/TCH 51).

### MISSED APPROACH

Climb to 4 000 ft on HDG 210°, then right turn direct to KOTTY and hold.



CATEGORY	A	B	C	D
S-VOR 22L	740/40 692(700-3/4)		740-1 3/4 692(700-1 3/4)	
S-VOR 22L (ALS INOP)	740/55 692(700-1)		740-2 692(700-2)	
 CIRCLING*	740-1 692(700-1)	1 140-1 1/2 1 092(1 100-1 1/2)	1 140-3 1 092(1 100-3)	1 380-3 1 332(1 400-3)

\* Circling not authorized for west of RWY 22-04.

Change : Page control.



**INTENTIONALLY**

**LEFT**

**BLANK**

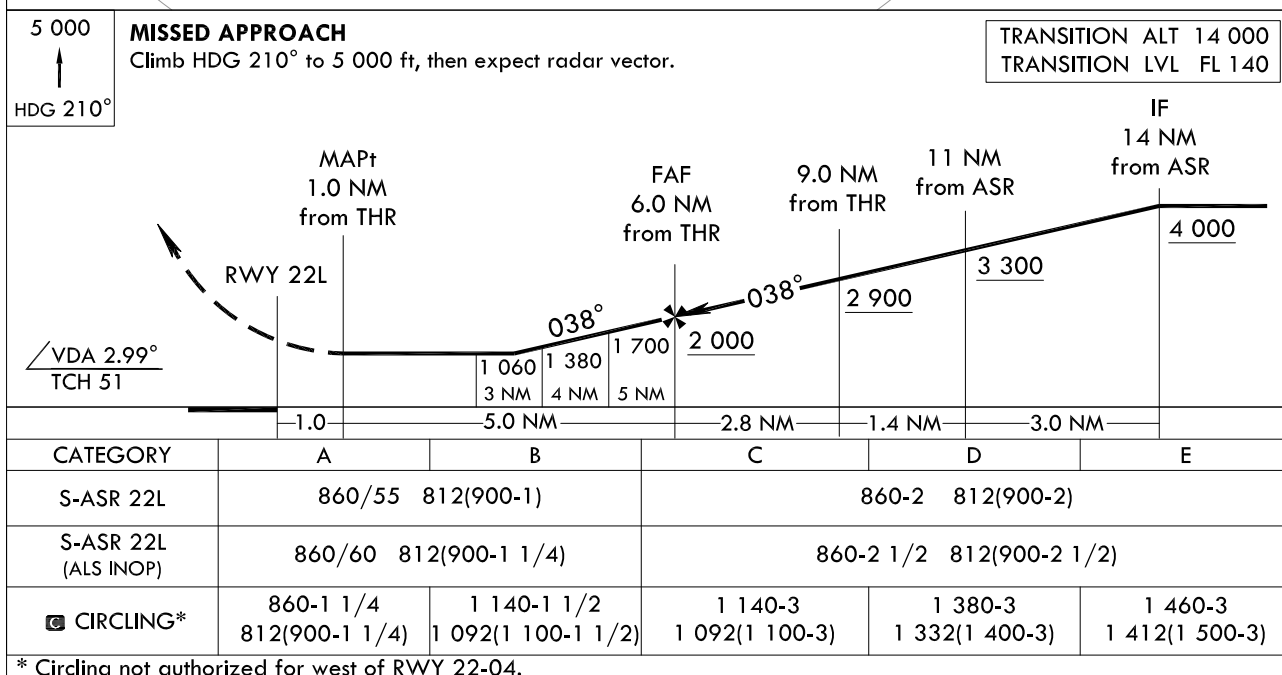
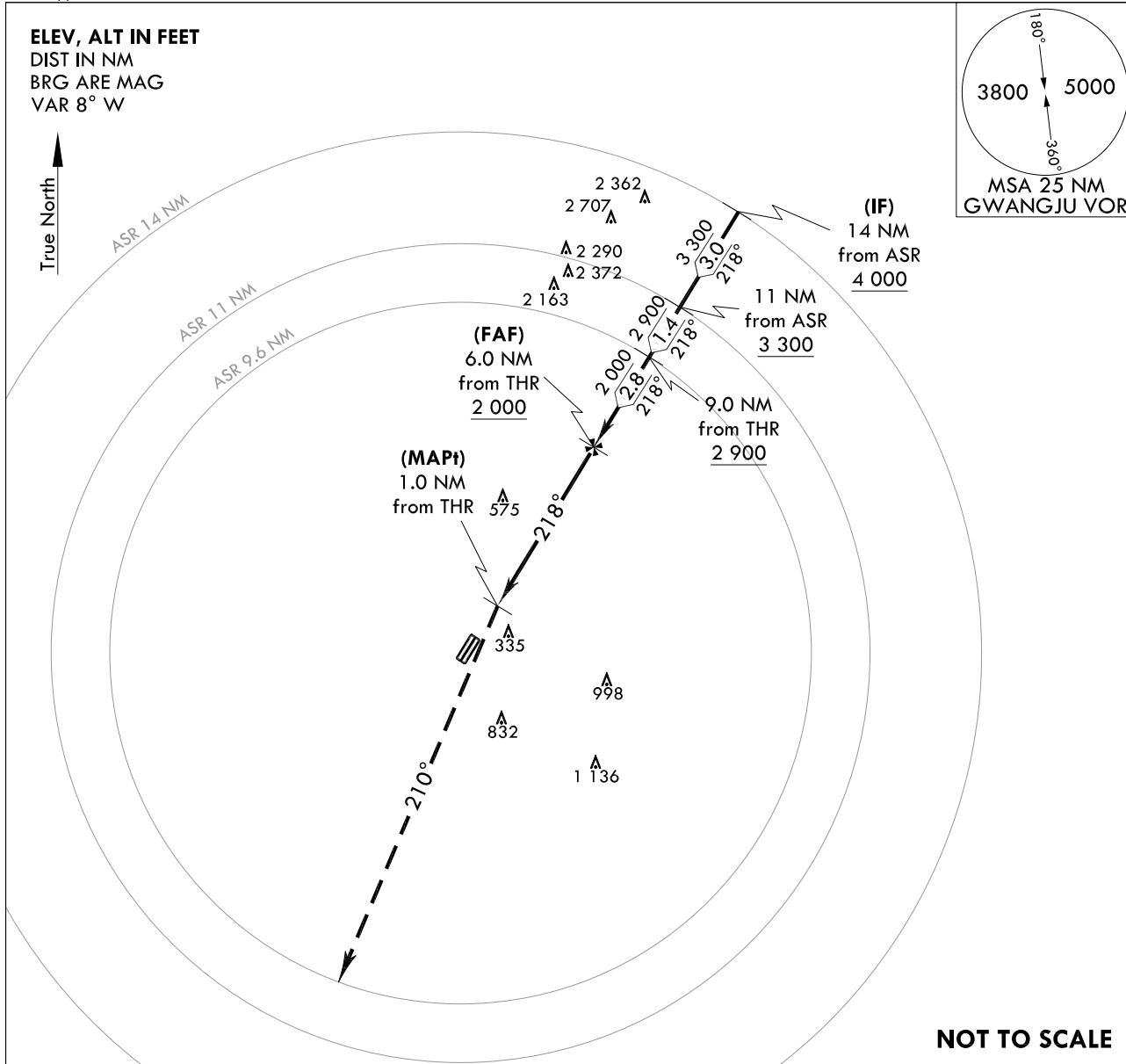
**INSTRUMENT  
APPROACH  
CHART**

**AERODROME ELEV 48 ft**  
HEIGHTS RELATED TO  
THR RWY 22L - ELEV **46 ft**  
HIGHEST ELEV TDZ **48 ft**

GWANGJU APP 130.0  
228.9  
GWANGJU TWR 118.05  
254.6

**GWANGJU/Gwangju(RKJJ)**  
**ASR RWY 22L**

Note : Approach and circle to land under U.S. TERPS.



Change : Page control.

**INTENTIONALLY**

**LEFT**

**BLANK**

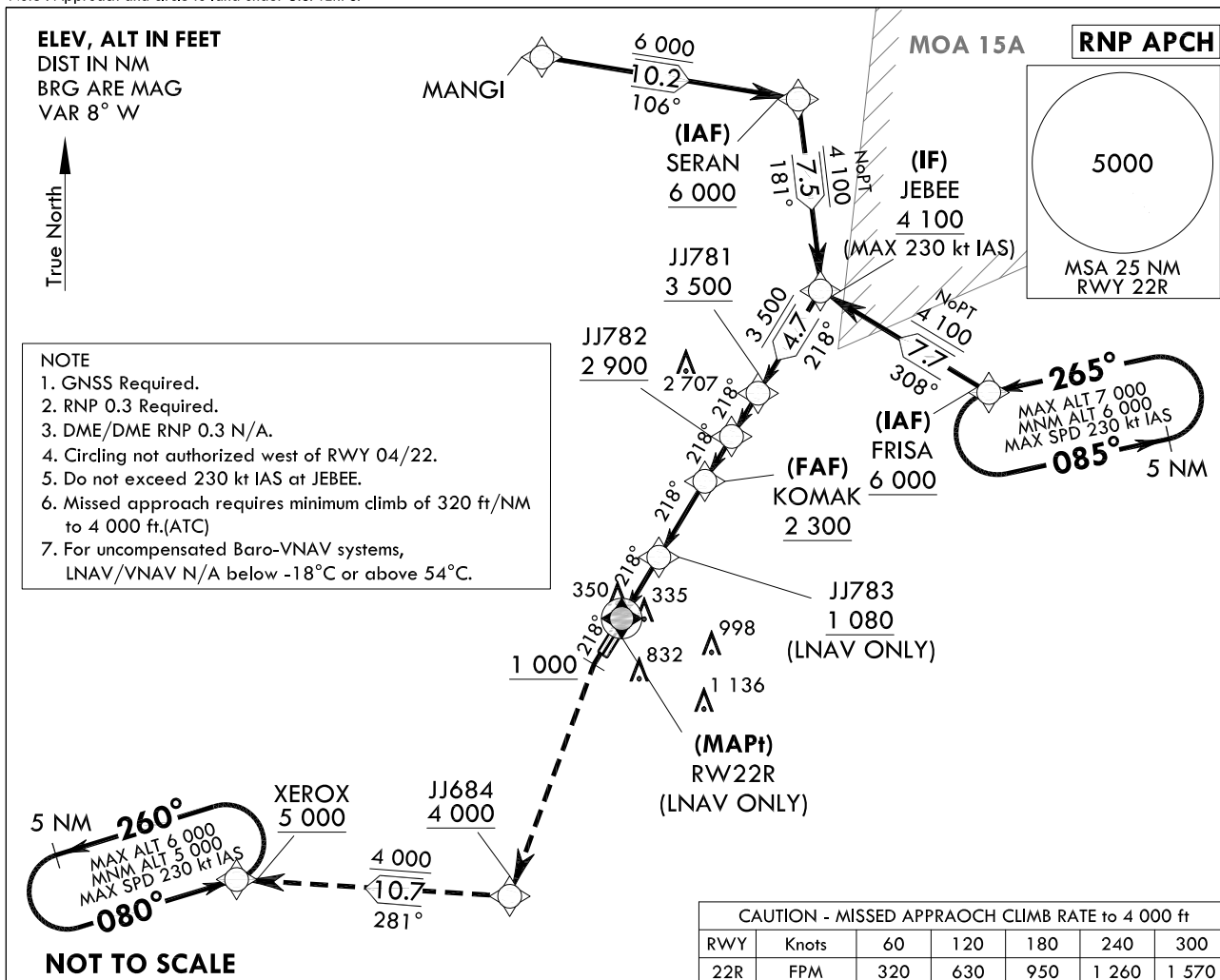
**INSTRUMENT  
APPROACH  
CHART**

**AERODROME ELEV 48 ft**  
HEIGHTS RELATED TO  
THR RWY 22R - ELEV 48 ft  
HIGHEST ELEV TDZ 48 ft

GWANGJU APP 130.0  
228.9  
GWANGJU TWR 118.05  
254.6

**GWANGJU/Gwangju(RKJJ)**  
**RNP RWY 22R**

Note : Approach and circle to land under U.S. TERPS.



1 000	4 000	JJ684	TR 281°	XEROX 5 000
-------	-------	-------	---------	-------------

**MISSED APPROACH**  
Climb HDG 218° to 1 000 ft, then climbing left turn direct to JJ684 at or above 4 000 ft, then track 281° to XEROX at or above 5 000 ft and hold.  
\* VGSI and descent angle not coincident (VGSI Angle 3.0/TCH 53).

TRANSITION ALT 14 000 TRANSITION LVL FL 140					
		(MAPt) RW22R (LNAV ONLY)	JJ783 (LNAV ONLY)	(FAF) KOMAK	JJ782 JJ781 (IF) JEBEE (IAF) SERAN FRISA
		GP 3.3° TCH 52	1.8 NM to RW22R (LNAV ONLY)	218° 218° 218° 218° 218°	180° 308°
			1 080	2 300 2 900 3 500 4 100 6 000	
			2.8 NM	3.48 NM 2.0 NM 2.0 NM 4.7 NM	
CATEGORY		A	B	C	D
LNAV/VNAV DA	ALS	568-1 3/8 520(600-1 3/8)			
	ALS INOP	568-1 5/8 520(600-1 5/8)			
LNAV MDA	ALS	660-1 1/2 612(700-1 1/2)			
	ALS INOP	660-1 3/4 612(700-1 3/4)			
CIRCLING		720-1 3/4 672(700-1 3/4)	1 140-1 3/4 1 092(1 100-1 3/4)	1 140-3 1 092(1 100-3)	1 380-3 1 332(1 400-3)

GWANGJU/Gwangju(RKJJ)  
RNP RWY 22R

## AERONAUTICAL DATA TABULATION

## Instrument Approach Procedure Coding Tables

Feeder Route - via MANGI to SERAN(IAF)

Serial Number	Path Descriptor	Waypoint Identifier	Fly- over	Course/ Track M(°T)	Distance (NM)	Turn direction	Altitude (ft)	Speed (kt)	Coordinates	VPA/ TCH	Navigation specification	Remarks
001	-	MANGI	-	-	-	-	-	-	35°30'11.3"N 126°44'31.7"E	-	RNAV 1	-
002	TF	SERAN	-	106 (098.0)	10.2	-	+6 000	-	35°28'45.5"N 126°56'50.7"E	-	RNAV 1	IAF

RNP RWY 22R - via SERAN to JEBEE(If)

Serial Number	Path Descriptor	Waypoint Identifier	Fly- over	Course/ Track M(°T)	Distance (NM)	Turn direction	Altitude (ft)	Speed (kt)	Coordinates	VPA/ TCH	Navigation specification	Remarks
001	IF	SERAN	-	-	-	-	+6 000	-230	35°28'45.5"N 126°56'50.7"E	-	RNP APCH	IAF
002	TF	JEBEE	-	181 (172.2)	7.5	-	+4 100	-230	35°21'16.8"N 126°58'05.5"E	-	RNP APCH	IF NoPT

RNP RWY 22R - via FRISA to JEBEE(If)

Serial Number	Path Descriptor	Waypoint Identifier	Fly- over	Course/ Track M(°T)	Distance (NM)	Turn direction	Altitude (ft)	Speed (kt)	Coordinates	VPA/ TCH	Navigation specification	Remarks
001	IF	FRISA	-	-	-	-	+6 000	-230	35°17'25.0"N 127°06'14.5"E	-	RNP APCH	IAF
002	TF	JEBEE	-	308 (300.1)	7.7	-	+4 100	-230	35°21'16.8"N 126°58'05.5"E	-	RNP APCH	IF NoPT

RNP RWY 22R - via JEBEE(If) to MAHF

Serial Number	Path Descriptor	Waypoint Identifier	Fly- over	Course/ Track M(°T)	Distance (NM)	Turn direction	Altitude (ft)	Speed (kt)	Coordinates	VPA/ TCH	Navigation specification	Remarks
001	TF	JEBEE	-	-	-	-	+4 100	-230	35°21'16.8"N 126°58'05.5"E	-	RNP APCH	IF
002	TF	JJ781	-	218 (210.0)	4.7	-	+3 500	-	35°17'12.3"N 126°55'13.2"E	-	RNP APCH	-
003	TF	JJ782	-	218 (210.0)	2.0	-	+2 900	-	35°15'28.1"N 126°54'00.0"E	-	RNP APCH	-
004	TF	KOMAK	-	218 (210.0)	2.0	-	+2 300	-	35°13'42.9"N 126°52'46.0"E	-3.3/52	RNP APCH	FAF
005	TF	JJ783	-	218 (210.0)	3.5	-	+1 080	-	35°10'41.8"N 126°50'38.9"E	-	RNP APCH	LNAV ONLY
006	TF	RW22R	Y	218 (209.9)	2.8	-	-	-	35°08'15.9"N 126°48'56.6"E	-	RNP APCH	MAPt LNAV ONLY
007	VA	1 000 ft	-	-	-	-	+1 000	-	-	-	RNP APCH	-
008	DF	JJ684	-	-	-	-	+4 000	-	34°57'17.9"N 126°43'53.3"E	-	RNP APCH	CG 320 ft/NM to 4 000 ft
009	TF	XEROX	-	281 (272.2)	10.7	-	+5 000	-	34°57'41.4"N 126°30'53.8"E	-	RNP APCH	-

## HOLDING PROCEDURE

Holding Identification	Path Descriptor	Waypoint Identifier	Fly- over	Course/ Track M(°T)	Distance (NM)	Turn direction	Altitude (ft)	Speed (kt)	Coordinates	VPA/ TCH	Navigation specification	Remarks
RNP RWY 22R	HM	FRISA	-	265 (256.6)	5.0	L	-7 000 +6 000	-230	35°17'25.0"N 127°06'14.5"E	-	RNAV 1	-
	HM	XEROX	-	080 (071.6)	5.0	L	-6 000 +5 000	-230	34°57'41.4"N 126°30'53.8"E	-	RNAV 1	-

Change : Establishment of feeder route, holding procedure and Information of ALT restrictions for JJ684, XEROX.

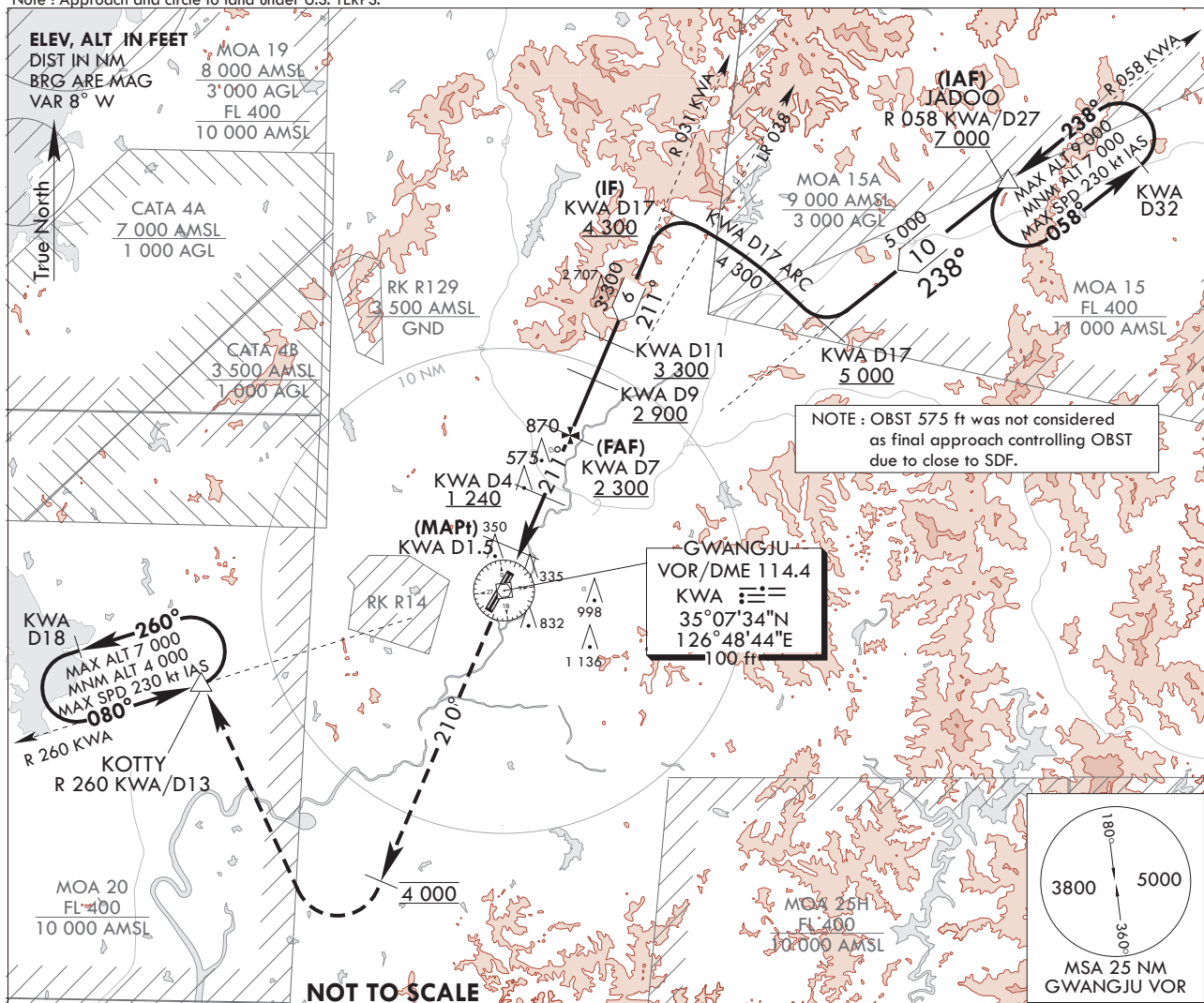
**INSTRUMENT  
APPROACH  
CHART**

**AERODROME ELEV 48 ft**  
HEIGHTS RELATE TO  
THR RWY 22R - ELEV 48 ft  
HIGHEST ELEV TDZ 48 ft

GWANGJU APP	130.0
GWANGJU TWR	228.9
	118.05
	254.6

**GWANGJU/Gwangju(RKJJ)**  
**VOR/DME RWY 22R**

Note : Approach and circle to land under U.S. TERPS.



4 000	↑	HDG 210°	KOTTY KWA D13
<b>MISSED APPROACH</b> Climb to 4 000 ft on HDG 210°, then right turn direct to KOTTY and hold. * VGSI and descent angle not coincident (VGSI angle 3.0/TCH 53).			
TRANSITION ALT 14 000 TRANSITION LVL FL 140			
VOR/DME RWY 22R VDA 3.29° TCH 53 D2.7 KWA D1.5 KWA D4 FAF KWA D7 KWA D9 KWA D11 IF R 031 KWA D17 R 058 KWA D17 IAF JADOO R 058 KWA D27 KWA D17 ARC KWA D17 (5 000, 4 300, 3 300, 2 900, 2 300, 1 240) DISTANCE MARKERS: 0.8, 2.5 NM, 3 NM, 2 NM, 2 NM, 6 NM			
CATEGORY	A	B	C
S-VOR 22R	740/40 692(700-3/4)		740-1 3/4 692(700-1 3/4)
S-VOR 22R (ALS INOP)	740/55 692(700-1)		740-2 692(700-2)
<input checked="" type="checkbox"/> CIRCLING*	740-1 692(700-1)	1 140-1 1/2 1 092(1 100-1 1/2)	1 140-3 1 092(1 100-3)
			1 380-3 1 332(1 400-3)

\* Circling not authorized for west of RWY 22-04.

Change : Page control.

**INTENTIONALLY**

**LEFT**

**BLANK**

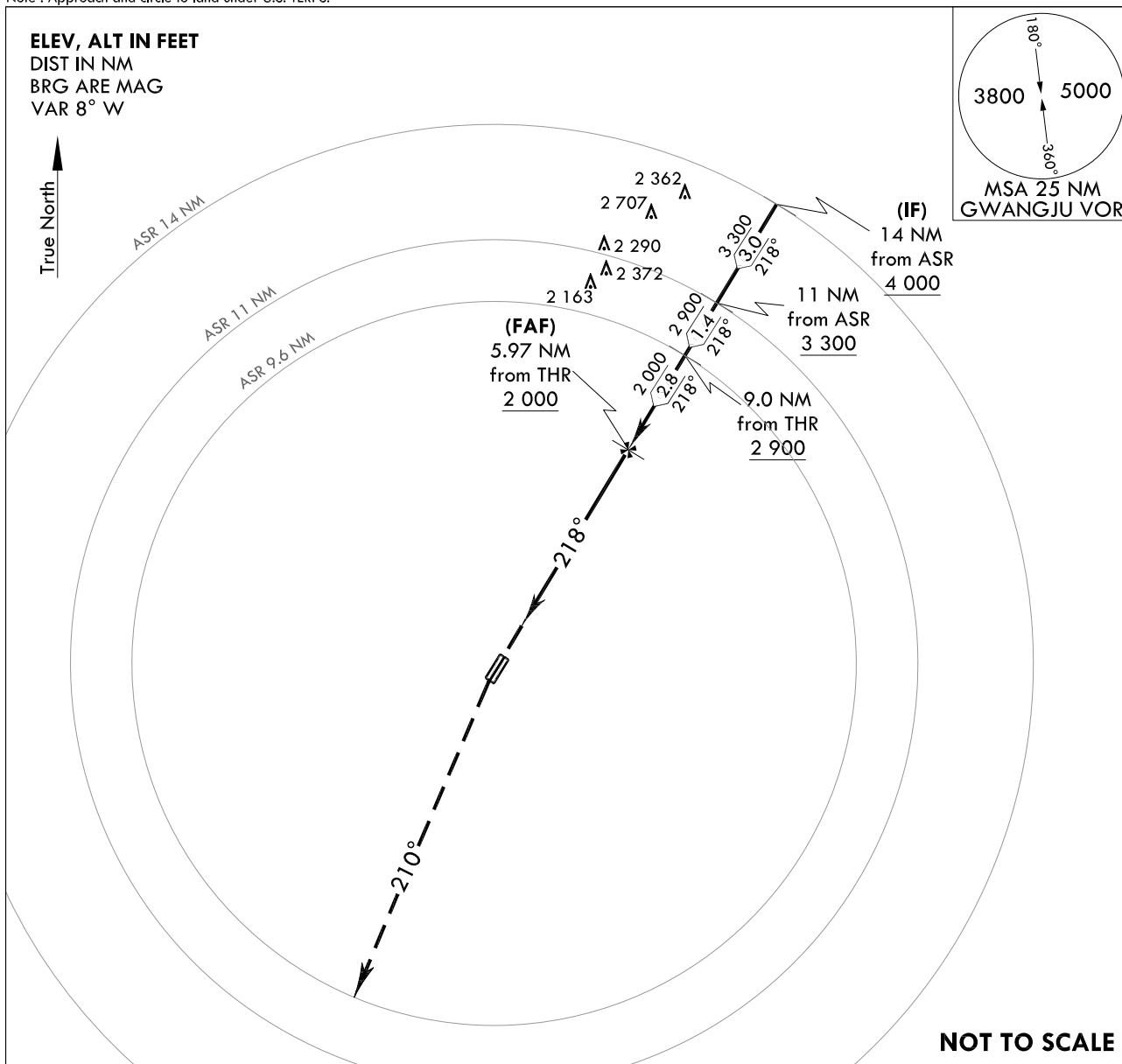


**AERODROME ELEV 48 ft**  
 HEIGHTS RELATED TO  
 THR RWY 22R - ELEV **48 ft**  
 HIGHEST ELEV TDZ **48 ft**

GWANGJU APP	130.0
	228.9
GWANGJU TWR	118.05
	254.6

**GWANGJU/Gwangju(RKJJ)**  
**PAR RWY 22R**

Note : Approach and circle to land under U.S. TERPS.

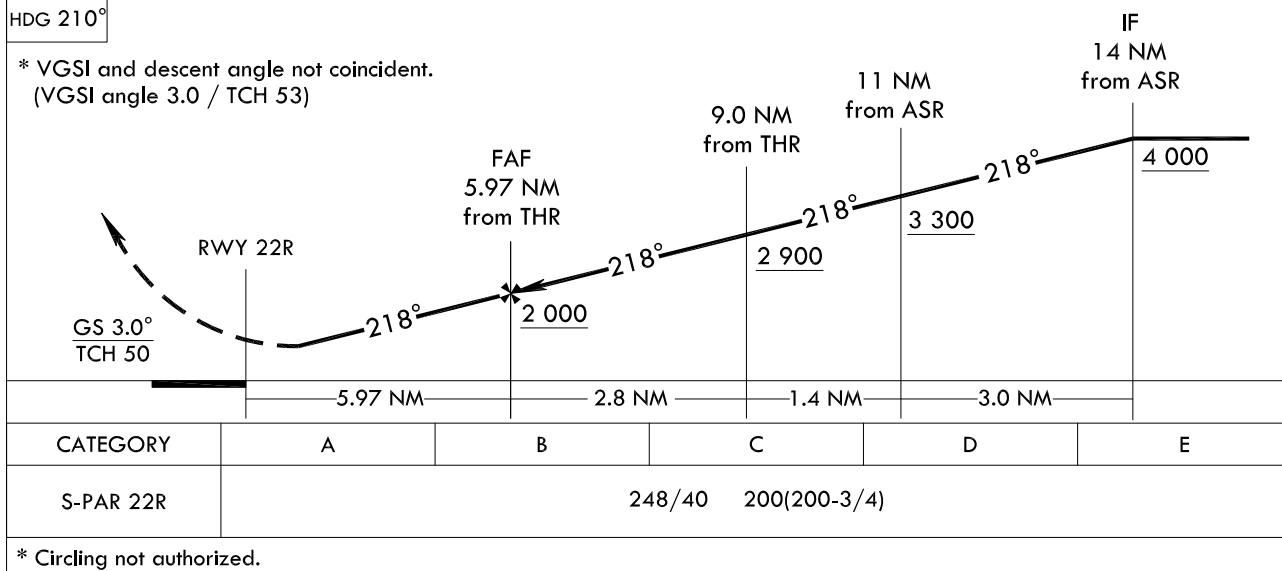


5 000  
↑  
HDG 210°

**Climb to 5 000 ft on HDG 210°, then expect radar vector.**

TRANSITION	ALT	14 000
TRANSITION	LVL	FL 140

\* VGSI and descent angle not coincident.  
(VGSI angle 3.0 / TCH 53)



\* Circling not authorized.

Change : Page control.

**INTENTIONALLY**

**LEFT**

**BLANK**



**INTENTIONALLY**

**LEFT**

**BLANK**